

Take the inside out with naturally beautiful shading systems.

**markilux**

safe timeless beautiful

markilux Designer awnings for conservatories, glass rooms and glass canopies







# There is always a clear line to our design which usually ends in a reddenot.

**Cool in summer, warm in winter** Unobstructed views into the garden in a protected environment: Conservatories and covered patios offer the best of the indoors and the outdoors. markilux designer awnings protect conservatories and glass canopies from strong sunlight and high temperatures and allow you to enjoy precious moments without limitation. Installed either on top of or below the glass roof they ensure a comfortable climate and reliable protection from glare. The high-grade textile shading systems from markilux are both elegant and robust. They reliably withstand wind and weather and provide an inviting ambience.

Forget summer and winter time; with markilux the feel-good factor is ever present. With reliable, innovative technology “Made in Germany” and multi-award-winning design.

markilux Designer awnings have received a multitude of awards:



| Brand



| Website



| e.g. markilux 8800/870, see product pages



reddot design award  
winner 2017

**markilux**  
safe timeless beautiful

# Reduced to the essence: Free. Time. Quality – Made in Germany.

**markilux Designer awnings “Made in Germany”** As a family business in the 4th generation we have been manufacturing awnings that set the highest of standards for almost 50 years. What makes markilux unique is the combination of designer quality awnings and the weaving of our awning covers all under one roof, which is why we are truly “Made in Germany” right down to the last detail. Our originality shows when it comes to making living outdoors even more enticing. We don’t stop at good solutions; we look to improve on these solutions every day. This allows us to offer the best to our customers in every respect – a perfect combination of form and function.

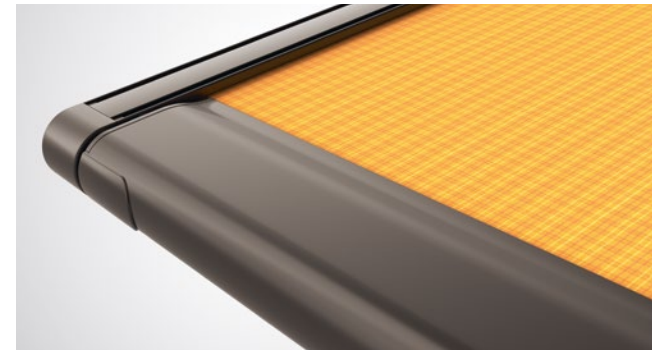
markilux designer awnings are characterised by quality, multi-award-winning designs and innovative technology and turn your favourite spot to relax into something extra special. You can take our word for it with our markilux quality promise.



**Quality** High-grade materials and our comprehensive quality management system ensure that each awning will have an extremely long service life. markilux is certified according to the EN ISO 9001 standard.



**Function** markilux combines innovative technologies and smart solutions with high-end products. With the variety of accessories available, you can enhance your markilux designer awning to suit your own requirements.



**Service** Our products, combined with the competent advice of our specialists and their professional installation, make the perfect solution. Our network of qualified specialist dealers guarantees you excellent personal service and that there is always someone at hand to answer any questions you may have.





# Create your own customised space to relax in.

**Your home. Your markilux.** Would you like to shade your conservatory in a stylish manner? Are you looking for an awning for your glass canopy, which unites impressive functionality and attractive design? Then allow yourself to be inspired by markilux.

With a choice of a large variety of models, and more than 250 cover patterns, you can create the markilux model that perfectly meets your requirements from numerous combination possibilities. With lighting modules and infrared heaters, as well as smart control technology, you can create a comfortable, ambient space which you can enjoy all year round.



**Perfect solutions** Nothing is impossible. Together with our specialist dealer you will find the perfect solution to any requirement.



**Textile ambience** markilux offers more than 250 timelessly beautiful patterns in the highest quality – the decision is yours.



**Excellent design** markilux has the awning that matches your home both from the outside and the inside.

**markilux**  
safe timeless beautiful







Above-glass conservatory awnings and  
underglass awnings for glass canopies

# Above-glass conservatory awnings.

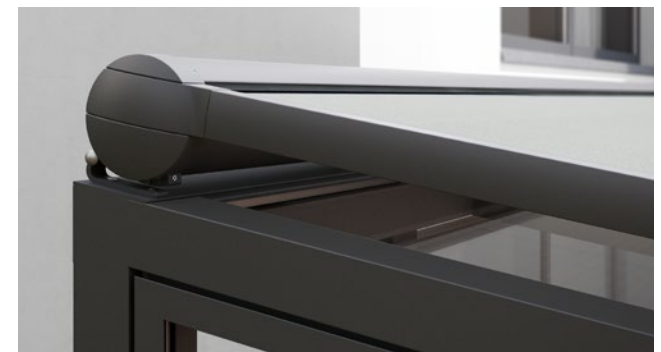
## Once on top. Always on top.



**Enjoy life in the conservatory even on the hottest of days** Your markilux awning fitted above the glass reflects glaring sunlight, ultraviolet light as well as heat radiation and at the same time immerses your conservatory in natural daylight. The heat remains outside while you can properly enjoy being inside. Whether small or large glass areas, classic or hipped roofs – enjoy comfortable temperatures, spare yourself the cost of having to switch on an air conditioning unit and create your very own dream conservatory.



**markilux 8850** Perfect for hipped roofs: the lateral guide tracks of the markilux 8850 can be indented by up to 100 cm.



**Excellent design** Elegant and functional. The fully closed cassettes of the markilux 8800 and 8850 protect the cover in wind and weather.

**markilux 8800** Excellent solar protection for up to 36 m<sup>2</sup> with only one cover. Even larger glass surfaces can easily be shaded with a coupled awning.







reddot design award  
winner 2017



**A round matter** With the markilux 870 shade up to 450 cm × 400 cm in a stylish manner and enjoy the comfort and quality of markilux for many years.

**Square. Practical. Unobtrusive.** Both this square awning for installation on top of a glass surface and its round counterpart are very quiet. Noise-reducing closing guides ensure the awning retracts quietly.



**markilux 870** With a diameter of 130 mm, the cassette harmoniously nestles against the conservatory and provides all-round protection to the retracted cover.



**markilux 770** Exceptionally compact at only 125 mm × 125 mm, the square full cassette completely protects the awning cover.

# Underglass awnings for glass canopies.

## Amazing. Under glass. A brilliant solution.



**In people's minds and above their heads** Spend the day outside in your own garden below a markilux designer awning that promises the best protection from too much sun, and helps create your very own cosy outdoor area. The cover extends from under the patio roof and is protected against dirt, wind and weather. All markilux underglass awnings impress with their compact, enclosed cassettes that blend harmoniously into the glass canopy. Numerous lighting options are available to allow you to perfect the ambience in the evening. Discover the options available on page 16.



**markilux 779** Compact square full cassette for those who prefer clean lines in design.



**markilux 879** Attractive round full cassette for those who love flowing curves.



**Shadeplus for markilux underglass awnings** The ideal addition to the shading options for glass canopies – completely in line with the clear design approach of markilux "Made in Germany", it is integrated into the front profile of the underglass awning.



## Optional LED lighting for the underglass awnings markilux 779 / 879



**markilux 779 with LED line in the cassette** Pleasant, ambient lighting in elaborate markilux design.



**LED spotlights fitted to the cover support tube** Put your favourite spot skilfully in the limelight and enjoy the evening in a pleasantly lit atmosphere. They can be dimmed and pivoted. With the markilux 779, they can also be mounted under the cassette.



**LED line on the guide tracks and cover support tube** Energy efficient, stylish and, like all markilux lighting modules, comfortably dimmable by means of remote control.









markilux Awning covers  
and frame colours



# markilux Awning covers.

## The most beautiful fabric between heaven and earth.

**Our unique covers help to create a special ambience for you** The colour and quality of the awning fabric is what helps make the ambience on your patio something special. Depending on the brightness and hue, colour distinction, patterns and textures help create that unique special effect. As a leading manufacturer of high-grade awning covers with almost 100 years of experience in the manufacturing of textiles, markilux offers an unparalleled variety. The markilux textile design team is constantly developing new patterns in line with the latest trends, which are nevertheless characterized by their timeless appeal. Within the 250+ patterns in thematically coordinated colour families, you are certain to find your very own unique fabric.

**He who seeks shall find** The most beautiful fabric for your designer awning can be found amongst the 250+ cover patterns at the showroom of your markilux specialist dealer or at [markilux.com](https://www.markilux.com)



## visutex

**markilux visutex Collection 50/4/me** Discover the subtle, balanced jacquard effect and powerful colours of the fabrics with this stunningly textured weaving technique. These unique awning fabrics are available exclusively and without any surcharge only from markilux.





perfortex

**Awning covers “Made in Germany”** We manufacture awning covers that maintain their shape and colour for years, and offer your home that special something. These high-tech awning fabrics are manufactured at the markilux production facility in Emsdetten, Germany in accordance with strict quality standards. The yarns are dyed using a process we ourselves developed and show their effect in up to 16 million distinctive colours with outstanding luminosity and colour intensity. This has resulted in functional textiles, which have set exceptionally high standards in terms of quality, UV protection, ease of care and appearance.

markilux awning covers are available in the qualities “sunsilk” or “sunvas” or as fabrics in our markilux specials collection serving specific requirements.



**sunsilk** Brilliant vividness. Silky smooth surface. sunsilk awning covers impress with their unique luminosity.



**sunvas** Soft glow. Textile-like to the touch. sunvas awning covers score with their textile character and natural appearance.



**perfortex** Ideal for conservatories. Gaps in the warp, woven into the fabric, make the material permeable to both air and water.



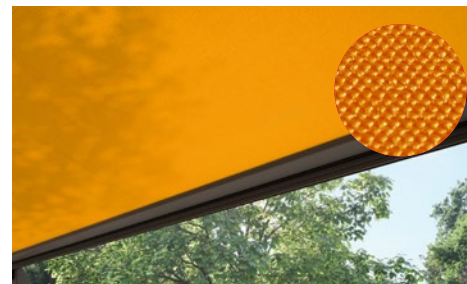
**transolair** Solar protection with a view. This sunvas fabric with special perforation technique stands for impressive transparency and good light and air permeability. This effectively reduces the build-up of heat.



**vuscreen ALU** Solar protection with added functionality. The aluminium particles encapsulated in the coating make it particularly effective at reflecting the sun's rays.



**perla** This highly water-repellent sunvas fabric is an effective protection against both sun and rain.



**perla FR** This flame-resistant and highly water-repellent sunsilk fabric complies with strict fire retardancy regulations.



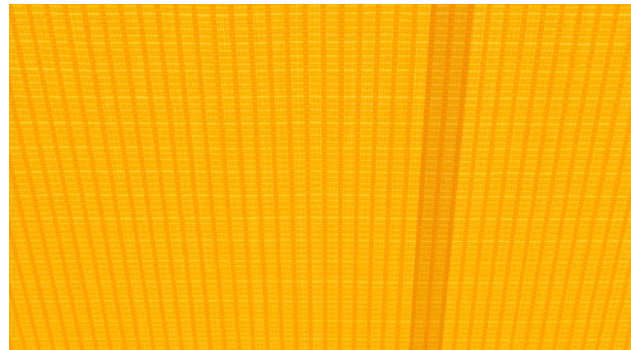
**Functionality can be so beautiful** During the production of our awning fabrics sunsilk and sunvas we leave nothing to chance. We add a final finishing flourish to the fabric using our snc coating, a special formula developed in house that creates a self-cleaning effect. This finish gives our awning covers incredible longevity and resistance against rain, light and fluctuations in temperature.

This is certified according to Oeko-Tex standard 100, which also guarantees they are free from harmful dyes or chemicals.

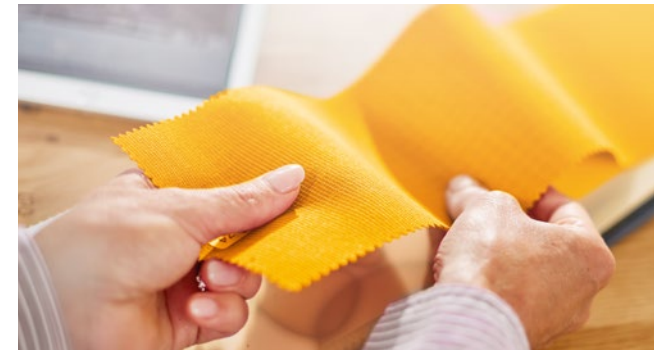
With an Ultraviolet Protection Factor (UPF) of 50+, all markilux awning covers made from sunsilk or sunvas offer the highest possible degree of UV protection. This allows you to enjoy sunny days for longer, without risk.\*



**Self-cleaning snc effect** Water droplets pick up dirt particles and run off the awning cover taking the dirt with them (the awning must be set at a pitch of at least 14 degrees). This gives you the peace of mind that your fabric will retain its colour and vibrancy for years without you having to lift a finger.



**Bonded awning covers** Panel joints bonded together ultrasonically ensure a consistent, unobtrusive appearance. Its excellent resistance to water, light and fluctuations in temperature ensures that the service life of the cover is extended substantially.



**Light, weather and colour resistance** High-tech yarns dyed right to the core and the high-grade snc finish developed in house guarantee the most stunning shade in which to relax.

\* Protect your skin with care! Do not spend longer periods outside without applying sun cream. The UPF afforded by the awning applies only to direct sunlight. It offers no protection against reflected sunlight (e.g. from water).

# markilux Frame colours.

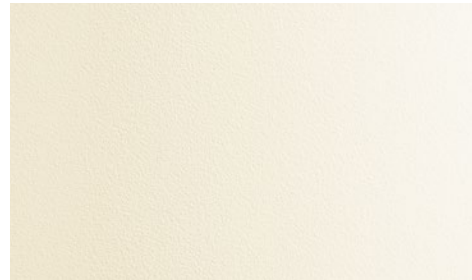
## Sounds perfect. Tone for tone.

**Matching every architectural style and customer demand** The awning frame colour complements and enhances the colour of the fabric and creates a perfect link to the architectural surroundings. From a variety of shades of white through to the elegant shades of anthracite, an enormous range of colours is available to you. Do you want a particular colour scheme? No problem! We will gladly manufacture your dream awning in your own personal shade. Our high-grade powder coating finish is guaranteed for any awning colour you choose.



Traffic white

RAL 9016



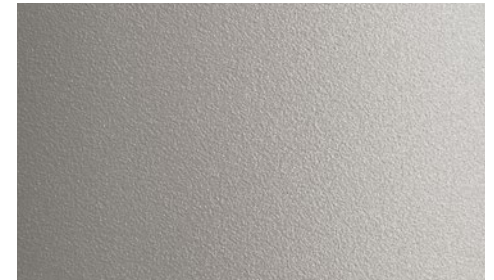
Off-white textured finish

5233



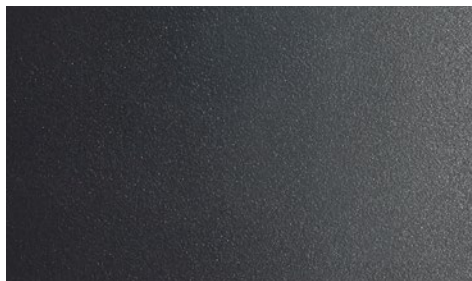
Metallic aluminium

RAL 9006



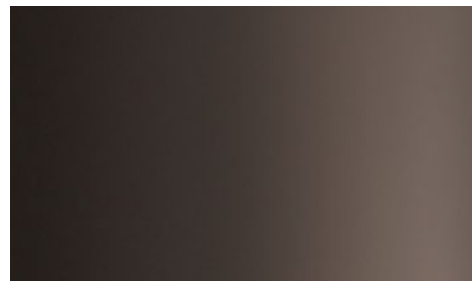
Stone grey metallic

5215



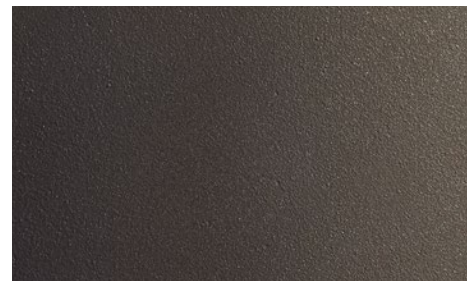
Anthracite metallic

5204



Grey brown

similar to RAL 8019



Havana brown textured finish

5229



RAL colour of your choice

© RAL Borm 2019







A man in a light-colored hoodie is seated at a table outdoors. On the table, there is a bottle of wine and a large vase filled with a bouquet of pink and white roses. The background shows a blurred green landscape under a bright sky.

markilux Ease of use,  
options, extras and overview



# markilux Operating options.

## Touch-button or automatic operation. So easy.

**Ease of operation that meets the highest demands and any weather conditions** The choice is yours: manual operation, hard-wired motor or radio-controlled motor with remote control, are all possible on most models. You can even operate the system while you are away via smartphone or tablet. Better yet, why not put your feet up and add sun, wind and rain sensors to provide automatic intelligent control of your markilux designer awning or blind?

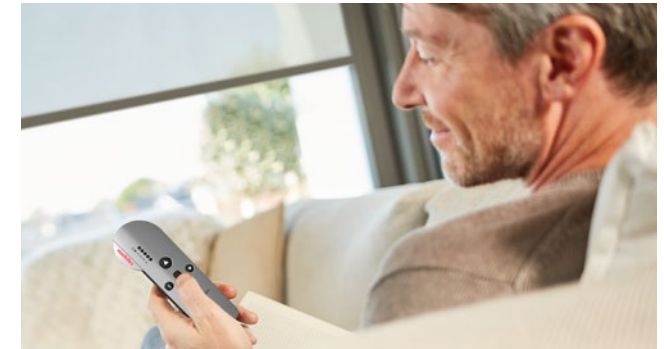
Your markilux specialist dealer is at your disposal should you have any queries regarding how you can operate your markilux with the greatest of ease and will provide you with details on how you can make your favourite place even more attractive with light and warmth.



**Home automation** Easily control your vertical blinds via smartphone or tablet – even when you are away from home. The smart control function with io technology via the app makes it possible.



**Intelligent control** With sun, wind and rain sensors, your markilux system can react to any changes in the weather. In sunny conditions the vertical blinds will extend automatically and in wind and rain they will retract.



**markilux Radio-controlled motor** Perfect protection from the sun, inquisitive glances and glare comfortably at the touch of a button.

**In a flash, at the touch of a button or as if by magic.** Whether above-glass awning for your conservatory or an underglass awning for the patio roof: control your awning, Shadeplus, light and warmth exactly the way you want.

# markilux Extras. Round off your outdoor living area with a touch of light and warmth.



**markilux Shadeplus** The ideal addition to the shading options for glass canopies, integrated into the front profile of the markilux 779/879.



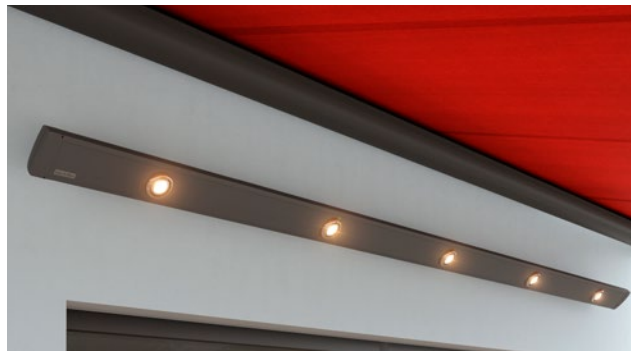
**Vertical designer blinds** Simply mask out glances and low-lying sun. Sit protected from the wind and rain. Enjoy the warmth of the day for longer. Adding vertical designer blinds from markilux make your outdoor room perfect – and more private.



**Side screen markilux 790** Protects against low-lying sun and wind from the side, as well as stopping prying eyes. Maximum height 250 cm. Maximum extension 450 cm (at a height of 173 cm).



**markilux Infrared heater** Feel the warmth in an instant and enjoy the evening outside for even longer. In a protected housing. Energy efficient and with a long service life. 2500 Watt, dimmable in three stages.



**markilux LED Spotline** Turn night into day. The elegant light bar in a powder-coated aluminium housing, that can be fitted almost anywhere. The LED spotlights can be tilted and swivelled. Available in two sizes: 180 cm with 3 spotlights and 300 cm with 5 spotlights.



**Coupled awning** An extensive range of brackets allows several units to be installed next to one another – creating XXL shading solutions.



**Decorative covers for guide track brackets**  
Improve the appearance depending on the model.



**Flush front profile** Completely extended it finishes flush with the guide tracks.

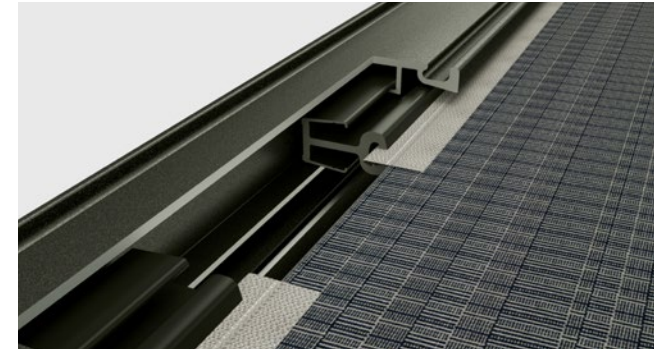
**markilux Panoramic windows** Would you like to be able to sit outside below your glass canopy protected from the wind and rain, but still be able to enjoy the view outside? For the vertical cassette blinds markilux 776/876 with tracfix, we offer you the markilux panoramic window. Maximum awning dimensions 600 cm x 300 cm. Maximum height of the panoramic window approx. 135 cm.







**Perfect cover fit** High cover tension is achieved by virtue of two special gas-pistons operating independently in the front profile.



**markilux tracfix** One of the many sophisticated features markilux offers: lateral cover guidance with no gap between the awning cover and guide track. For a more beautiful overall appearance and better wind stability.

Conservatory awnings for installation on top of the glass

markilux 8800



markilux 8850



markilux 770



markilux 870



|                                   |  |  |  |  |
|-----------------------------------|--|--|--|--|
| <b>Maximum width × projection</b> | 700 × 450 cm / 500 × 700 cm<br>600 × 450 cm / 500 × 600 cm (tracfix)             | 650 × 400 cm<br>500 × 500 cm                       | 450 × 400 cm                                       | 450 × 400 cm                                       |
| <b>Cassette dimensions</b>        | Ø 187 mm   | Ø 187 mm   | 125 × 125 mm                                       | Ø 130 mm   |
| <b>Operation type</b>             | <b>Hard-wired motor</b><br>optional<br>radio-controlled motor*<br>silentec motor | <b>Hard-wired motor</b><br>radio-controlled motor* | <b>Hard-wired motor</b><br>radio-controlled motor* | <b>Hard-wired motor</b><br>radio-controlled motor* |
| <b>Cover guidance system</b>      | <b>Guide tracks</b><br>optional<br>tracfix                                       | <b>Guide tracks</b>                                | <b>Guide tracks (tracfix)</b>                      | <b>Guide tracks (tracfix)</b>                      |
| <b>Cover tension</b>              | <b>Gas pistons</b>   | <b>Gas pistons</b>                                 | <b>Gas pistons</b>                                 | <b>Gas pistons</b>                                 |
| <b>Wind resistance class</b>      | <b>3</b>   | <b>2</b>   | <b>3</b>   | <b>3</b>   |
| Beaufort force/wind speed         | 6 → 38 – 48 km/h<br>6 → 24 – 30 mph  | 5 → 28 – 37 km/h<br>5 → 17 – 23 mph                | 6 → 38 – 48 km/h<br>6 → 24 – 30 mph                | 6 → 38 – 48 km/h<br>6 → 24 – 30 mph                |
| <b>Options **</b>                 | tracfix<br>coupled awning  |  |  |  |

\* Remote control, smart (app) or intelligent control possible.

\*\* Some options cannot be combined.

## Underglass awnings for glass canopies

### markilux 779



600 × 450 cm / 400 × 600 cm  
600 × 400 cm (tracfix)

125 × 125 mm

#### Manual operation

hard-wired motor  
radio-controlled motor\*

#### Guide tracks

tracfix

#### Gas pistons

2 – 3 depending on size / 3 with tracfix

5 – 6 → 28 – 48 km/h  
5 – 6 → 17 – 30 mph

LED spotlights

under the cassette and / or  
on the cover support tube  
LED line in the cassette,  
on the guide rails  
and / or in the cover support tube  
shadeplus / drop valance

### markilux 879



600 × 450 cm / 400 × 600 cm  
600 × 400 cm (tracfix)

Ø 130 mm

#### Manual operation

hard-wired motor  
radio-controlled motor\*

#### Guide tracks

tracfix

#### Gas pistons

2 – 3 depending on size / 3 with tracfix

5 – 6 → 28 – 48 km/h  
5 – 6 → 17 – 30 mph

LED spotlights

on the cover support tube  
LED line  
on the guide rails  
and / or in the cover support tube  
shadeplus / drop valance



**Put only the best between you and the sun:** Create the most seductive shade in the world. markilux designer awnings are a symbiosis of innovative technology and the pinnacle of quality and have received both acclaim and multiple awards. Ideas, detailed information, professional advice and all exquisite markilux awning cover patterns can be found in your specialist dealer's showroom and at [markilux.com](https://www.markilux.com)

[markilux.com](https://www.markilux.com)

***markilux***  
safe timeless beautiful