

Put only the best between you and the sun.
Create the most seductive shade in the world.

markilux
safe timeless beautiful

markilux Designer awnings for patio and balcony





There is always a clear line to our design which usually ends in a redden.

Outdoor living Hours of beneficial relaxation and spending time with family and friends – these are the precious moments we savour outside. Designer awnings from markilux not only provide shade, they open up new opportunities for enjoying life. They provide protection on hot days and make for a cosy ambience long after the sun has set.

In choosing a markilux designer awning, you are opting for the very best quality “Made in Germany”, for multi-award-winning design – and for endless hours of light-hearted fun outdoors.

markilux Designer awnings have received a multitude of awards:



| Brand



| Website



| e.g. markilux MX-1, see product pages



reddot design award
winner 2015

markilux

safe timeless beautiful



The sun smiles above an awning. Life smiles on you under a markilux.

markilux Designer awnings for patio and balcony

markilux “Made in Germany”

markilux Quality	6
Individuality down the line	8

Cassette awnings

markilux MX-1	14
markilux MX-1 compact	16
markilux ES-1	20
markilux 6000	22
markilux 5010	24
markilux 970	26
markilux MX-3	28
markilux 990	32
markilux 3300	34
markilux 1710	36

Semi-cassettes, open awnings and the side screen

markilux 1600	40
markilux 930	42
markilux 1700	44
markilux 790	46

Awning systems

markilux pergola	50
markilux pergola compact	52
markilux planet	56
markilux syncra	58
markilux construct	60
markilux markant	62

markilux Covers and frame colours

markilux Awning covers	66
markilux Awning frame colours	70

Options, extras and overview

markilux Operation	74
markilux Options	76
markilux Extras	78
Overview awnings	80
Overview awning systems	82

Reduced to the essence: Free. Time. Quality – Made in Germany.

markilux Designer awnings “Made in Germany” As a family business in the 4th generation we have been manufacturing awnings that set the highest of standards for almost 50 years. What makes markilux unique is the combination of designer quality awnings and the weaving of our awning covers all under one roof, which is why we are truly “Made in Germany” right down to the last detail. Our originality shows when it comes to making living outdoors even more enticing. We don’t stop at good solutions; we look to improve on these solutions every day. This allows us to offer the best to our customers in every respect – a perfect combination of form and function.

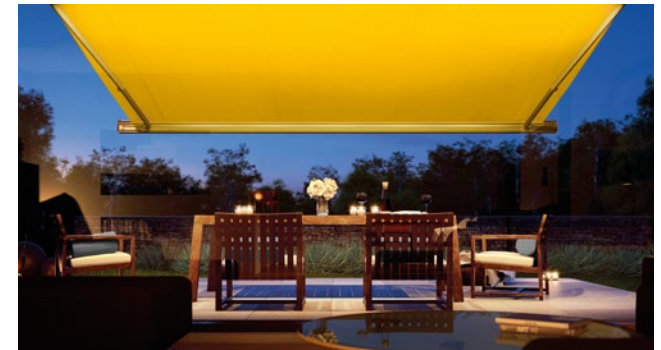
markilux designer awnings are characterised by quality, multi-award-winning designs and innovative technology and turn your favourite spot to relax into something extra special. You can take our word for it with our markilux quality promise.



Quality High-grade materials and our comprehensive quality management system ensure that each awning will have an extremely long service life. markilux is certified according to the EN ISO 9001 standard.



Function markilux combines innovative technologies and smart solutions with high-end products. With the variety of accessories available, you can enhance your markilux designer awning to suit your own requirements.



Service Our products, combined with the competent advice of our specialists and their professional installation, make the perfect solution. Our network of qualified specialist dealers guarantees you excellent personal service and that there is always someone at hand to answer any questions you may have.





Designer awnings from markilux. Individuality right down the line.

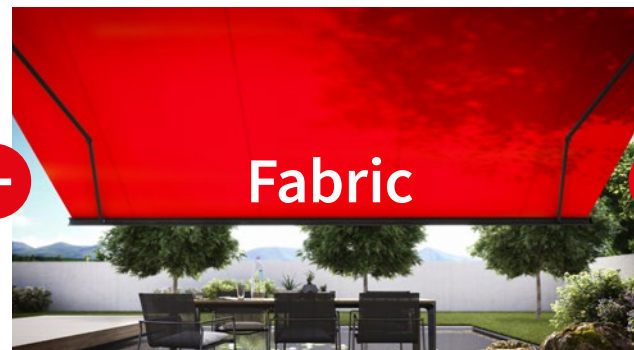
There are numerous ways you can customise your designer awning Your markilux designer awning is as unique as you are. With a choice of more than 45 models, 250 fabric patterns and a wide range of accessories you can design an awning to suit your every need. With lighting modules, infrared heaters, smart control technology and other additional functions, markilux awnings can enhance your outdoor experience at any time of day. Your markilux specialist dealer will gladly assist you with their professional advice and suggestions when helping you configure your very own designer awning.

markilux 3D | App Visualize and configure your dream awning “live” on the façade of your own home and experience many of the details in a virtual environment. Simply download it free of charge from your App or Google Play Store.



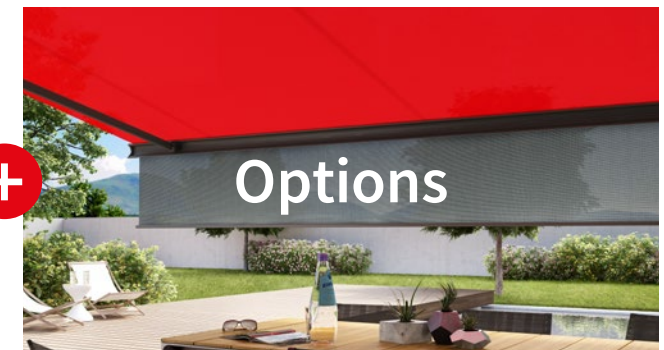
Design and function perfectly combined Every markilux designer awning combines design, quality and technology into one unique solution. Within our large range of models, there is bound to be one that fulfils your wishes in terms of functionality and matches the ambience of your patio or balcony perfectly.

from page 10



Large range of colours and patterns Our textile designers identify current trends from interior design, architecture and choice of colour and turn them into unique awning covers. markilux offers you an extensive selection with more than 250 patterns to choose from.

from page 64



Options and extras Our optional lighting solutions, easy-to-use operating technology and additional extras such as infrared heaters mean that we can build your system to your desired specification. We aim to make being outdoors a pleasure for you even when the sun isn't shining.

from page 72





markilux Cassette awnings

markilux Cassette awnings

Elegant all-round protection With a markilux cassette awning you're protected whatever the weather. When the awning is retracted, the cassette completely encompasses the awning cover and provides the best possible protection from wind and weather.

markilux MX-1 | The Ultimate One



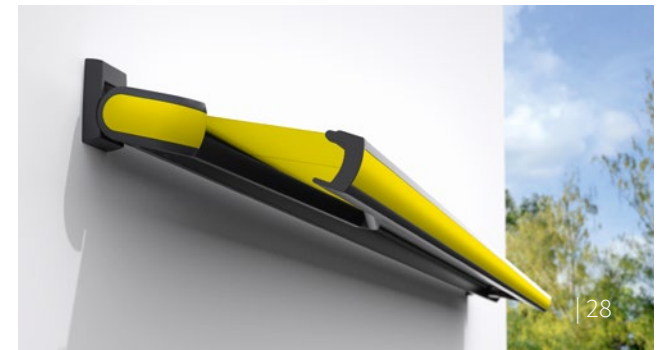
markilux MX-1 compact | The Petite Ultimate One



markilux 970 | The Linear One



markilux MX-3 | The Curved One



markilux ES-1 | The Unique One



markilux 6000 | The Individual One



markilux 5010 | The Family-friendly One



markilux 990 | The Slim One

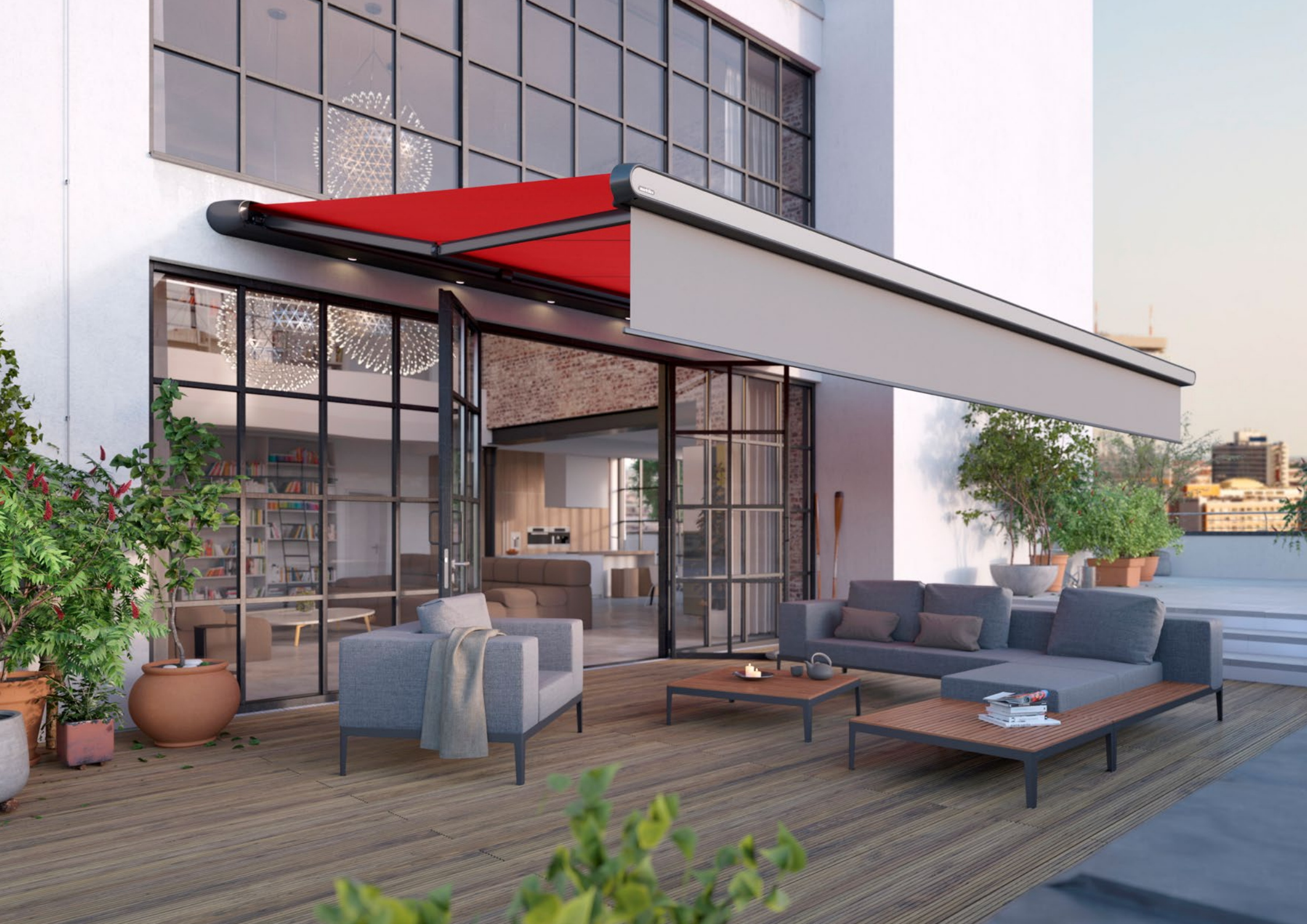


markilux 3300 | The Practical One



markilux 1710 | The Classic One





markilux MX-1.

Quality has its merits. Usually the very best ones.

The Ultimate One Even at first glance, the markilux MX-1 makes an immediate impact with its unique mix of shape and functionality. Retracted, the tapered full cassette with a depth of 62 cm makes a deep impression on the observer as a canopy that protects your awning from the effects of the weather. When extended the markilux MX-1 shows its true magnitude. This, the ultimate in designer awnings, is a pioneer due to the numerous technological innovations it incorporates and its multi-award winning design. The markilux MX-1 creates an unparalleled atmosphere at any time of the day, which will charm you again and again, today and in the future.



LED spotlights in the canopy Highlight specific areas and enjoy the evening hours under the awning in a delightful atmosphere. Discover further lighting and design options on page 18.

markilux Shadeplus The additional vertical blind in the front profile protects against low-lying sun and prying eyes at the touch of a button.



Dimensions max. 700 cm × 437 cm,
overall depth approx. 62 cm

Folding arms Bionic tendon

Options Shadeplus,
a broad range of light
and colour options,
see page 18



reddot design award
winner 2015



markilux MX-1 compact.

Delivering beautiful protection, any time of year.

The Petite Ultimate One The petite markilux MX-1 with all the technological innovations and with the variety of features typical of markilux. It also offers you spectacular ambient lighting, brilliant LED options in the front profile as well as every option to influence the colour design. The petite ultimate one makes your favourite spot in the garden particularly enticing. The markilux MX-1 compact enhances the appearance of buildings with a modern, minimalist architectural design.



A personal statement on any façade The petite ultimate markilux MX-1 compact with an overall depth of 38 cm is an eye-catcher as well as solar and wet weather protection all rolled into one.

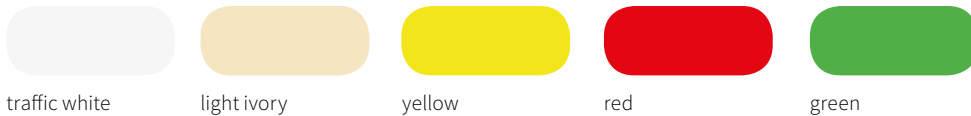


- Dimensions** max. 700 cm × 415 cm,
overall depth approx. 38 cm
- Folding arms** Bionic tendon
- Options** Shadeplus,
a broad range of light
and colour options,
see page 18

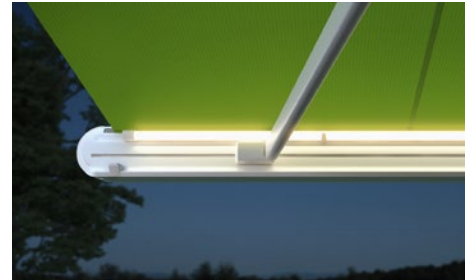


reddot design award
winner 2015

markilux MX-1 | MX-1 compact – options



LED ambient lighting An impressive eye-catcher in the evening hours. The lit-up front profile is available in five contrasting colours and can be dimmed.



LED line in the front profile Gives uniform lighting and a pleasant ambience after sunset.



LED spotlights in the front profile A brilliant lighting effect converts the room under the awning into an oasis of well-being in the evening.



Colour combinations Cassette and front panel are available in different colours, which can be combined freely.



LED spotlights in the front canopy Let the evening come and with it the time of captivating lighting effects, optionally directed downwards and /or upwards. Available only in the markilux MX-1.

markilux Shadeplus At just the touch of a button, the optional protection from glare and prying eyes creates an enviable, private room outdoors. As standard, the Shadeplus is equipped with a radio-controlled motor and is operated via the markilux remote control supplied.

Allow yourself to be inspired Whosoever makes the effort to discover the variety of options at markilux will love them. Design your own personal awning with a markilux specialist dealer near you or at [markilux.com](https://www.markilux.com)





markilux ES-1.

The one that withstands the elements.

The Unique One The world's only designer awning made of marine grade stainless steel is a design piece to fall in love with. The markilux ES-1 is a perfect combination of material, shape and function. This makes this awning a visual highlight, which will lose none of its magnificence even after many years, as the corrosion-resistant stainless steel will not fail you in even the stormiest of weather. With the markilux ES-1 you own a stylish treasure that brings you a great deal of pleasure and invites you to enjoy your outdoor life with sophistication.



Valance This classic extension of the cover suspended from the front profile gives your stainless steel treasure a classy touch. Available in different shapes and manufactured to match the pattern of the awning cover.



Stainless steel gas pistons With impressive power, the perfectly matched gas piston technology of the folding arms is a visual highlight and ensures optimum cover tension – even when the awning is not extended completely.



Dimensions max. 650 cm × 300 cm
max. 600 cm × 350 cm

Folding arm gas piston

Options valance



reddot design award
winner 2001



markilux 6000.

No false modesty: Germany's top model.

The Individual One A designer awning with many faces – each one more beautiful than the next. Create your own personal and unique model from a wide range of awning frame colours, decorative elements and available accessories. With its remarkable dimensions and technical values, the markilux 6000 makes a lasting impression. It also cuts a dashing figure as well. Invite Germany's top model into your home.



markilux Shadeplus The vertical shading in the front profile adds the finishing touch and provides personal protection from the sun and prying eyes. On request the Shadeplus can come with a hard-wired or radio-controlled motor.

LED spotlights in the front profile More than a decorative highlight. The markilux 6000 lights up your favourite spot in an elegant, flexible and energy-efficient manner, just the way you want it.



Variable decorative elements Whether you choose the end cap insert in stainless steel mesh, the end cap trim in a chrome finish or all deliberately uniform in the awning colour of your choice – you can design your very own personalised top model by markilux.

Dimensions max. 700 cm × 400 cm

Folding arm Bionic tendon

Options LED spotlights in the front profile, end cap insert in stainless steel mesh, end cap trim in polished chrome, Shadeplus, valance, coupled awning



reddot design award
winner 2006



markilux 5010.

At home in every family.

The Family-friendly One The markilux 5010 effortlessly extends, either at the touch of a button or via smart control through an app, this awning will be a hit with all the family. On top of that, as a coupled unit with up to three awnings installed next to one another, friends and guests will also be able to find a cosy spot in the generous shade this awning offers. This multi-talent encourages relaxed get-togethers and turns any hour spent outdoors into a happy hour.



markilux Shadeplus Enjoy relaxing on the patio even when the sun is low in the sky.



Dimensions max. 700 cm × 400 cm

Folding arm double chain-link arms, optional: Bionic tendon

Options polished chrome fittings, Shadeplus, valance, coupled awning

Polished chrome fittings Optionally available as an eye-catcher – and without surcharge, it's so friendly to your wallet: the chrome-look end caps fitted to the front profile.



markilux 970.

Urban chic for a clean, sleek appearance.

The Linear One This awning exudes urban lifestyle with confidence. The neat and slim appearance of the markilux 970 makes it the ideal model for those who love the simplicity of elegance. This svelte designer awning wraps your patio in comforting light and makes it a stylish place of retreat where your guests, too, will completely feel at home. Lighting, numerous styling options and the different front panel finishes lend that individual something to the markilux 970. All in all, because of its clean lines and straightforward design, this awning is an all round performer.



markilux Shadeplus For more protection from prying eyes and glare: The optional vertical blind in the front profile will captivate you.



LED lighting LED spots attached to or LED line recessed into the cassette make for a stylish ambience at dusk and during the evening.



- Dimensions** max. 600 cm × 300 cm
max. 500 cm × 350 cm
- Folding arm** Bionic tendon
- Options** LED line in the cassette, LED spots under the cassette, numerous colour combinations, three front panel finishes, Shadeplus



Variety in design The colours of the cassette and front panel can be freely combined. There are three further anodised, accentuated colours available for the front profile: silver, bronze and black.





markilux MX-3. The awning with both elegant curves and clean lines.

The Curved One Shapely curves, clean lines, a fascinating colour spectrum – these are the defining features of the new markilux MX-3. The colour choice of the all-round styling panel offers a unique customisation option and makes the hearts of patio and balcony owners beat faster. When closed, the awning makes a good impression with its harmonious appearance, and when opened it fully reveals its technical superiority. The innovative designer awning markilux MX-3 makes an excellent long-term impression with its very attractive price to performance ratio.



The new light in the awning sky The best place under the sun – even in the evening. Ideal for the most enjoyable hours outdoors.

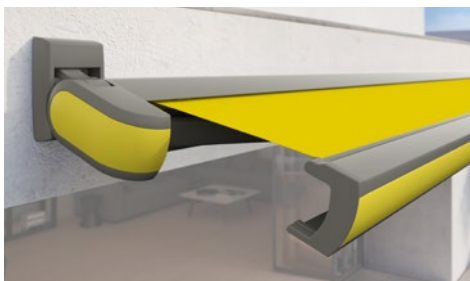


Clear lines. All round. If you like shapely curves in combination with a straightforward design, you will love the new markilux MX-3.

- Dimensions** max. 600 cm × 300 cm
max. 500 cm × 350 cm
- Folding arm** Bionic tendon
- Options** LED line in the cassette,
LED spots under the cassette,
numerous colour combinations,
coloured styling panel
and end cap insert

 special
architecture
edition

markilux MX-3 – Our special architecture edition 2019



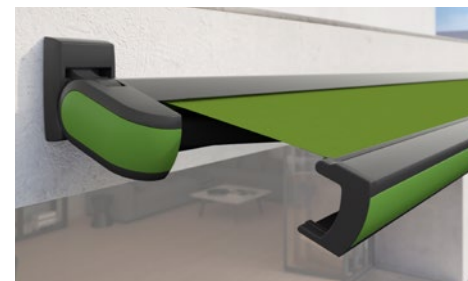
Sulphur yellow RAL 1016 | 5215 | 32471*



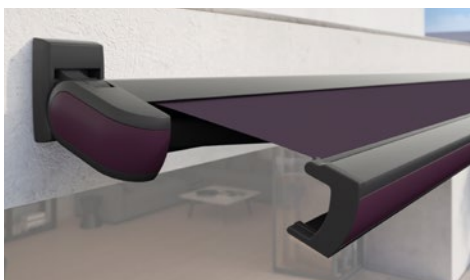
Red orange RAL 2001 | 5229 | 30912*



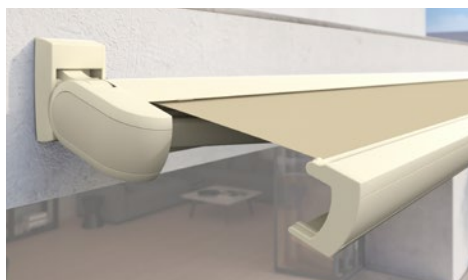
Traffic red RAL 3020 | 5204 | 31003*



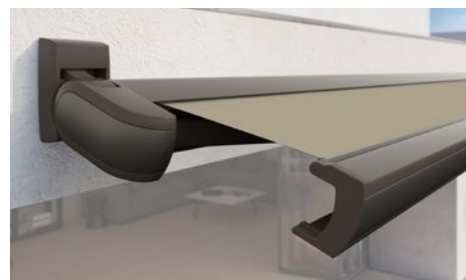
Yellow green RAL 6018 | 5204 | 32506*



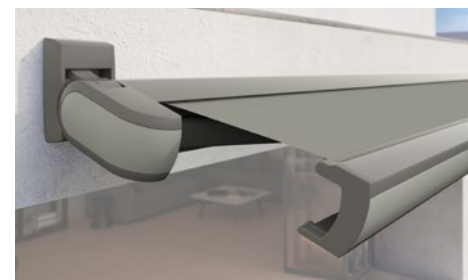
Purple violet RAL 4007 | 5204 | 31054*



Pearl white RAL 1013 | 5233 | 30937*



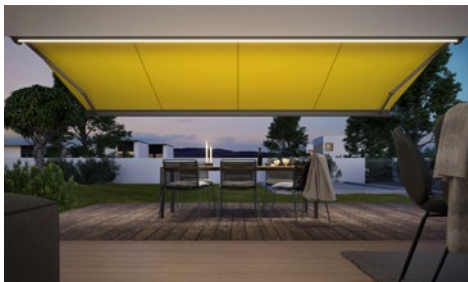
Pearl mouse grey RAL 7048 | 5229 | 31487*



Agate grey RAL 7038 | 5215 | 31592*



Colour and contentment unlimited The markilux MX-3 takes the changing times into account. Not only with its trend-setting design but in particular with the option of personalising the colour of this designer awning. The standard markilux awning frame colours – and eight additional accentuated colours for the all-round styling panel – can be combined at will without surcharge and are available with a colour-coordinated, recommended awning cover on request. For even more individuality, the cassette, all-round styling panel and cover can be selected from their respective RAL colour swatches.



Perfect. All-round. Whether with ambient lighting provided by an LED line or directional via accentuated, directional LED spots – outstanding highlights can be found in the showroom of your specialist dealer or at [markilux.com](https://www.markilux.com)





markilux 990.

Create a carefree ambience.

The Slim One Small, but impressive! You will be surprised how much technological sophistication there is in this 125 mm high cassette. The compact construction with U-shaped front profile into which the folding arms and awning cover disappear. An impressive angle of pitch of up to 70 degrees when top fixing make this awning best suited for smaller patios and balconies. Thanks to these advantages you can easily spend many hours relaxing in the shade.



End cap insert in polished chrome Add that certain extra touch to your markilux 990.



Wall sealing profile The slim aluminium profile in the same colour as the awning closes the gap between the awning and the wall, allowing rain to be discreetly drained off the front of the awning.

- Dimensions** max. 500 cm × 300 cm
- Folding arm** twin steel-link chains, optional: Bionic tendon
- Optionen** end cap insert in polished chrome, valance



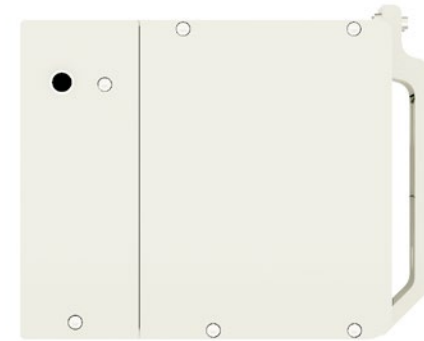
markilux 3300.

High impact. Low maintenance.

The Practical One Can an awning be merged visually into the architecture of a house? The markilux 3300 proves that it can. Depending on the structural situation, this designer awning, with its smooth front profile disappears completely into a wall or precisely into a recess. When extended, it comes into its own with dimensions of up to 7 by 4 metres. And you can shade even larger areas by coupling up to three single awnings together. Discover how practical the markilux 3300 can be, and make this awning a big hit in your home.



Angular design By virtue of exact recess installation in the ceiling or wall, the markilux 3300 blends perfectly into its structural surroundings.



Dimensions max. 700 cm × 400 cm

Folding arm Bionic tendon

Options valance,
coupled awnings



markilux 1710.

Slim, compact shading all year round.

The Classic One The markilux 1710 interprets the classic awning shape in a contemporary manner. The visible round torque bar merges organically with the round cassette to form an elegant design feature. Due to its shape and the timelessly beautiful decorative features made from polished chrome, the markilux 1710 will suit almost any patio.



Polished chrome fittings Side caps matching the awning colour or deliberately emphasised in finely polished chrome. This awning can simply wear anything.



markilux 1710 stretch For great performance on narrow patios, balconies and in recesses: Thanks to the two crossover arms even awnings with a narrow width can extend considerably further.

- Dimensions** max. 700 cm × 350 cm
- Folding arm** Bionic tendon
- Options** polished chrome fittings, valance, coupled awnings stretch version



German
Design Award
NOMINEE 2014



reddot design award
winner 2012





markilux Semi-cassettes,
open awnings and the side screen



markilux 1600. Perfect functionality meets award winning design.

The Elegant One This awning was awarded the IF product design award for its harmonious, semi-circular design. As a semi-cassette awning, the markilux 1600 is open at the bottom and still looks unique when it's fully extended. The top cover profile adapts itself to the angle of pitch of the awning and closes completely flush with the front profile when retracted, which protects the cover safely from rain.



markilux Shadeplus Simply block out low-lying sun and prying eyes with the additional vertical blind in the front profile of the markilux 1600.



Polished chrome fittings Give extra dash to the design language of your semi-cassette awning on the front profile and support tube.

Dimensions max. 710 cm × 400 cm

Folding arm twin steel-link chains, optional: Bionic tendon

Options LED spotlights, end caps in polished chrome, Shadeplus, valance, coupled awnings, stretch version

markilux 1650 The model variant with swivelling dimmable LED spotlights in the front profile guarantees a pleasant ambience in the evening.





markilux 930.

Tending to perfection.

The Mobile One This awning moves differently from the rest, because as you retract the markilux 930, the awning pivots into a horizontal position and disappears below the soffit. When extended, the angle of pitch can be set at up to 80 degrees – so if required, the awning can pivot almost to the vertical. The markilux 930 is perfect for all balconies and eaves that require no additional protection of the awning or awning cover. This awning allows you to enjoy being outside in the evening even when the sun is low in the sky.



Pivoting mechanism The just 122 mm high awning structure disappears discreetly under the soffit, when retracted. Only during the extension process does the markilux 930 pivot to the desired angle.

Valance This additional decorative finish to the front profile lends the perfect balcony awning individual charm.



Dimensions max. 500 cm × 300 cm

Folding arm twin steel-link chains

Options valance



reddot design award
honourable mention 2009



markilux 1700.

Fully open and magnificent.

The Open One Whenever you would like to enjoy life outdoors, the open design of the markilux 1700 will create comfortable shading on your patio or balcony. Its organic design is elegant and timeless, and thanks to the stable support tube, it opens up the possibility to connect up to three awnings together, allowing the possibility to shade large areas without any problem.



Polished chrome fittings Both the open markilux 1700 and its closed counterpart, the markilux 1710, can be embellished with polished chrome end caps and inserts on request.



markilux 1700 stretch Available for narrow recesses and openings, with two crossover folding arms providing greater projection than width.



Dimensions max. 700 cm × 400 cm

Folding arm Bionic tendon

Options polished chrome fittings,
valance,
coupled awnings,
stretch version



German
Design Award
NOMINEE 2014



reddot design award
winner 2012



markilux 790. The diplomatic way to show neighbours where privacy begins.

The Upright One There are few seating areas outdoors that are protected on all sides from sun, wind and prying eyes. Therefore, this slim markilux side screen simply makes your life on balcony or patio more comfortable and enticing. The robust compact cassette can be mounted easily and it can be extended in one smooth movement. The markilux 790 is always by your side when you need it and whenever you feel like making use of its benefits.

Dimensions extension: max. 450 cm
height: 90 cm – 250 cm

Options sloping top edge,
mobilfix,
various installation
bracket options



A broad range of brackets For any situation markilux has an apt installation option.



mobilfix The moving support post with granite base plate stands secure, wherever you want it to.



Sloping top edge The cover is available with a sloping top edge which can be adapted to the pitch of your markilux awning. It creates a beautiful, enclosed and protected area free from prying eyes and the glare of the sun.



A man with short brown hair, wearing a light-colored t-shirt, is smiling and holding a slice of watermelon. He is standing under a white, retractable awning system. The background is slightly blurred, showing a building and some greenery. The overall scene is bright and sunny.

markilux Awning systems



markilux pergola. Here's to getting together, whatever the weather.

The Resolute One The markilux pergola ranks top when it comes to solar and wet weather protection. The awning system on slender posts and lateral guide tracks provides generous shading with an extension of up to 6 metres. The markilux pergola defies wind and weather up to Beaufort 6 (wind resistance class 3). You can make this awning your own with a markilux Shadeplus, an array of lighting options and post variants. No matter how strong the sun shines or the wind blows, with your markilux pergola you can enjoy life outdoors at any time.

Dimensions max. 600 cm × 450 cm
max. 500 cm × 600 cm

Options Shadeplus and a number of other comfort and design options, see page 54



Coupled awning For all those who want even more shade: Up to five single units can be joined side by side.

markilux Shadeplus The additional vertical blind integrated into the front profile simply blocks out low-lying sun and the glances of inquisitive neighbours.



Closed full cassette The cover disappears completely inside the cassette and is ideally protected. If anything can be more beautiful than the appearance of the awning, it is the way the markilux pergola functions faultlessly.



markilux tracfix One of markilux's many sophisticated features: the lateral cover guidance system without a gap between the cover and guide track. For a more beautiful overall appearance and better wind stability.





markilux pergola compact.

A certainty. Everywhere. For everyone.

The “Compact” Resolute One The pergola compact unites the graceful shape of the classic pergola with state-of-the-art product design and sophisticated technology. The compact, space-saving awning system on slender support posts and with lateral guide tracks, which always keep the cover taut, is ideal for smaller patios. The pergola compact invites you to linger and relax. Attractive and functional solar protection. Everywhere. For everyone.

Dimensions max. 450 cm × 400 cm

Options Shadeplus and a number of other comfort and design options, see page 54



Always in the best light Highlights with LED spots attached to or LED line recessed into the cassette, on the guide tracks and / or in the cover support tube guarantee endless hours of pleasure outdoors – even long after the sun has set.



An “all-round” achievement The square, compact cassette protects the awning cover all round.



markilux Shadeplus Blocking out the sun and prying looks in an instant.



GERMAN
DESIGN
AWARD
WINNER
2018



reddot design award
winner 2017

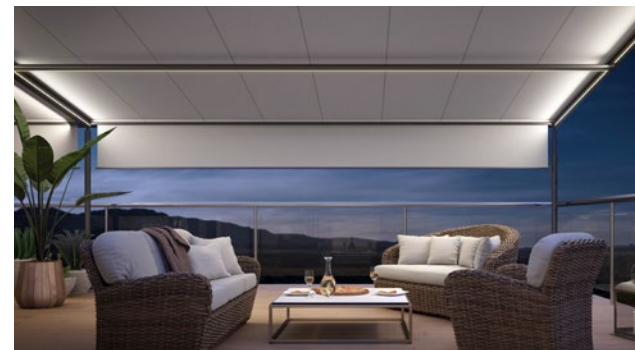
markilux pergola – options



markilux sundrive An integrated solar panel drives the Shadeplus motor for the markilux pergola. When the awning is extended the front profile and the guide tracks finish perfectly flush with one another.



Adjustable post For better water drainage, the front post of the markilux pergola can be lowered in a flash between 20 and 40 cm depending on the size.



LED line Light for reading or informal get-togethers, optionally in the guide tracks and /or in the cover support tube, turns your night into day.



Square posts As an alternative to round posts, square ones fulfil the desire for clean straight lines.



Stabilisation boxes Give your markilux pergola reliable stability, when fitting the front posts to foundations is not possible or desired.



Stainless steel crank Bring the adjustable posts to the desired height in no time at all.



LED spotlights attached to the cover support tube These spotlights will provide perfect contrast lighting in the evening hours, pivoting and dimmable.





markilux planet.

Always revolving around your requirements.

The Flexible One The markilux planet is a parasol and awning in one. It's an eye-catcher that provides perfect shading for your room outdoors. This awning-cum-parasol protects you from solar radiation with exceptional reliability; it's extremely sturdy, yet mobile. With the easy to use lever in the flex variant, you can simply rotate it by up to 335°, so you can have shade wherever it is required. The slim post carries the selected markilux designer awning with ease and the combination of functionality and design is impressive.



markilux Shadeplus This versatile protection against low-lying sun, inquisitive glances and glare in the front profile allows you to enjoy the late afternoon sun without having to worry about prying eyes.

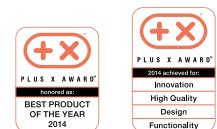


flex option The markilux planet can be rotated by up to 335° and positioned wherever you need shading. The Easy-go lever makes rotating the planet flex a snap, locking and unlocking it in any position.

Dimensions depending on awning model
max. 600 / 610 cm × 300 cm
max. 500 / 510 cm × 350 cm

Folding arm depends on model

Options depending on awning model,
flex rotates up to 335 degrees



markilux syncra.

Allow them to stand on their own two feet.

The Down-to-earth One The markilux syncra promises generous shading right where you need it. As a single unit up to 60 m² and as a coupled awning even larger areas are no problem. This free-standing awning literally stands on its own two feet: two round or square posts and a massive cross beam ensure reliable stability. Depending on the requirement, one or two folding arm awnings or markilux pergolas can be attached to it. This awning system is either firmly anchored to the ground (“fix”) or installed using stabilisation boxes (“flex”). No matter which variant you choose, you can count on the markilux syncra.

Dimensions depending on the model up to 60 m², as a coupled unit even larger

Folding arm depends on the model

Options depending on the awning, uno (only one awning/pergola), flex (with stabilisation boxes), round or square posts, base plate covers, coupled awning, lighting, infrared heaters, Shadeplus



markilux syncra uno Two feet. One awning. No problem. The markilux syncra uno proves itself a stable base for one “wing”.



markilux syncra pergola With the additional posts at the front and tracfix – the lateral cover guidance system, this option offers particular advantages in terms of size and wind stability.



markilux syncra flex Stabilisation boxes permit a set-up without concrete foundations at the installation site.



markilux construct.

When you need just that little bit more.

The Limitless One There are situations where a standard model is not enough to meet your special requirements. In these situations system solutions are required. The awning system markilux construct is extremely versatile and flexible. Different modules unite with different awnings to create a veritable awning landscape. You don't have to make any compromises when it comes to size, and the range of available accessories is impressive. You can choose between round and angular posts. It is almost impossible to describe the markilux construct: you just simply have to experience it in your own garden.

Dimensions almost unlimited thanks to modular and versatile awning system

Options depending on awning model, round / angular posts, triangular acrylic windows or covers for the gable ends, lighting, infrared heaters, base plate covers



Designer awnings to your own precise specification

Different conservatory and folding-arm awnings are possible and can be combined with vertical blinds or side screens according to your wishes.





markilux markant.

Make the rain take a detour.

The Striking One The free-standing shading system markilux markant is protection against sun, wind and rain, that can be tailored to your precise requirements. The awnings, integrated into the frame, lend the system a textile character, their fabrics making it possible to create the pleasant colour ambience you have in mind.

The markant offers protection, security, freedom, outstanding looks and comfort in a purist design.



On request – that little bit more From the atmosphere-creating lighting with LED line or spots through infrared heaters to vertical cassette blinds with panoramic windows, the markilux markant fulfils all your wishes as far as the creation of an al fresco oasis of relaxation goes.


Dimensions Max. post separation up to 600 cm × 600 cm with two independently functioning awnings, as a single unit up to 300 cm × 600 cm, overall height 260 cm, other heights are possible

Options LED lighting, infrared heaters, vertical cassette blinds

Versatile in both form and function As stand-alone unit or integrated into the existing architecture, the markilux markant makes a big impression in any situation. Detailed information about the markilux markant is available from your markilux specialist dealer or at markilux.com





The image features a soft-focus background of lush green trees and foliage. In the upper left corner, a portion of a white awning structure is visible, including a horizontal beam and a vertical support. The overall scene is bright and natural, suggesting an outdoor setting.

markilux Awning covers and
awning frame colours



markilux Awning covers.

The most beautiful fabric between heaven and earth.

Our unique covers help to create a special ambience for you The colour and quality of the awning fabric is what helps make the ambience on your patio something special. Depending on the brightness and hue, colour distinction, patterns and textures help create that unique special effect. As a leading manufacturer of high-grade awning covers with almost 100 years of experience in the manufacturing of textiles, markilux offers an unparalleled variety. The markilux textile design team is constantly developing new patterns in line with the latest trends, which are nevertheless characterized by their timeless appeal. Within the 250+ patterns in thematically coordinated colour families, you are certain to find your very own unique fabric.

He who seeks shall find The most beautiful fabric for your designer awning can be found amongst the 250+ cover patterns at the showroom of your markilux specialist dealer or at [markilux.com](https://www.markilux.com)



visutex

markilux visutex Collection 50/4/me Discover the subtle, balanced jacquard effect and powerful colours of the fabrics with this stunningly textured weaving technique. These unique awning fabrics are available exclusively and without any surcharge only from markilux.



Awning covers “Made in Germany” We manufacture awning covers that maintain their shape and colour for years, and offer your home that special something. These high-tech awning fabrics are manufactured at the markilux production facility in Emsdetten, Germany in accordance with strict quality standards. The yarns are dyed using a process we ourselves developed and show their effect in up to 16 million distinctive colours with outstanding luminosity and colour intensity. This has resulted in functional textiles, which have set exceptionally high standards in terms of quality, UV protection, ease of care and appearance.

markilux awning covers are available in the qualities “sunsilk” or “sunvas” or as fabrics in our markilux specials collection serving specific requirements.

sunsilk



Brilliant vividness. Silky smooth surface. sunsilk awning covers impress with their unique luminosity.

sunvas

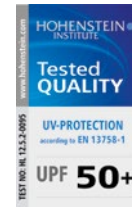


Soft glow. Textile-like to the touch. sunvas awning covers score with their textile character and natural appearance.

specials



Textiles for special requirements Semi-transparent, heat-reflecting, permeable, highly water resistant and flame-retardant materials for blinds and awnings extend the range of the overall markilux collection.



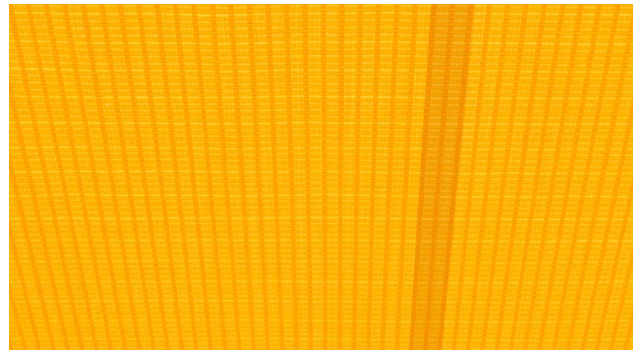
Functionality can be so beautiful During the production of our awning fabrics sunsilk and sunvas we leave nothing to chance. We add a final finishing flourish to the fabric using our snc coating, a special formula developed in house that creates a self-cleaning effect. This finish gives our awning covers incredible longevity and resistance against rain, light and fluctuations in temperature.

This is certified according to Oeko-Tex standard 100, which also guarantees they are free from harmful dyes or chemicals.

With an Ultraviolet Protection Factor (UPF) of 50+, all markilux awning covers made from sunsilk or sunvas offer the highest possible degree of UV protection. This allows you to enjoy sunny days for longer, without risk.*



Self-cleaning snc effect Water droplets pick up dirt particles and run off the awning cover taking the dirt with them (the awning must be set at a pitch of at least 14 degrees). This gives you the peace of mind that your fabric will retain its colour and vibrancy for years without you having to lift a finger.



Bonded awning covers Panel joints bonded together ultrasonically ensure a consistent, unobtrusive appearance. Its excellent resistance to water, light and fluctuations in temperature ensures that the service life of the cover is extended substantially.



Light, weather and colour resistance High-tech yarns dyed right to the core and the high-grade snc finish developed in house guarantee the most stunning shade in which to relax.

* Protect your skin with care! Do not spend longer periods outside without applying sun cream. The UPF afforded by the awning applies only to direct sunlight. It offers no protection against reflected sunlight (e.g. from water).



markilux Frame colours.

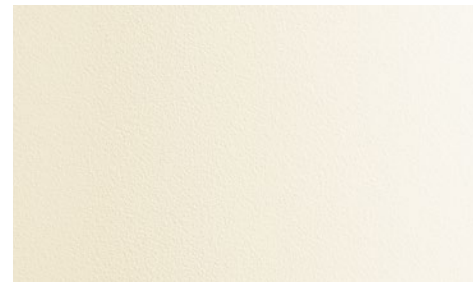
Sounds perfect. Tone for tone.

Matching every architectural style and customer demand The awning frame colour complements and enhances the colour of the fabric and creates a perfect link to the architectural surroundings. From a variety of shades of white through to the elegant shades of anthracite, an enormous range of colours is available to you. Do you want a particular colour scheme? No problem! We will gladly manufacture your dream awning in your own personal shade. Our high-grade powder coating finish is guaranteed for any awning colour you choose.



Traffic white

RAL 9016



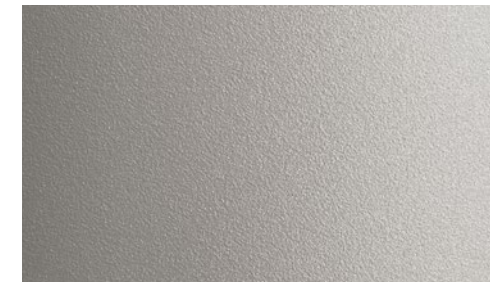
Off-white textured finish

5233



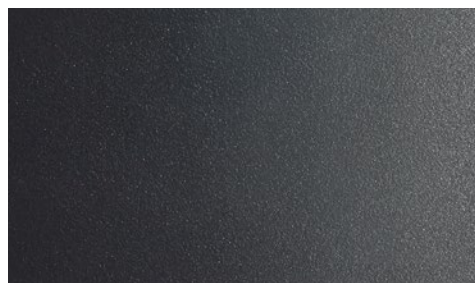
Metallic aluminium

RAL 9006



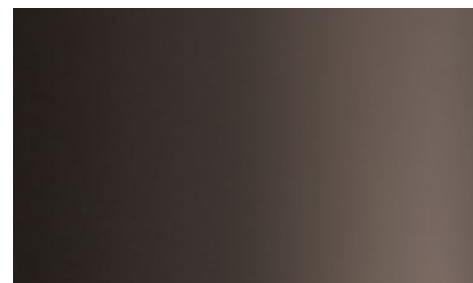
Stone grey metallic

5215



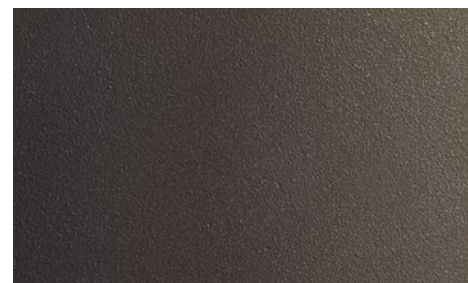
Anthracite metallic

5204



Grey brown

similar to RAL 8019



Havana brown textured finish

5229



RAL colour of your choice

© RAL Bohn 2019





markilux Ease of use,
options, extras and overview

markilux Operating options.

Touch-button or automatic operation. So easy.



silentec motor Deafeningly quiet. Permanently reduces the noise the motor makes when extending and retracting the awning. Availability depends on model and dimensions.



markilux remote control Comfort can be so easy. Shade, light and warmth at the touch of a button.



Light and wind sensor Depending on the current weather situation, this intelligent control system will extend and retract your awning automatically.



Light sensor Intelligent control of your awning depending on the ambient solar light intensity. Independent of the mains thanks to solar cell technology.



Rain sensor The awning retracts automatically in the case of precipitation by virtue of this intelligent control mechanism, which protects the awning cover.

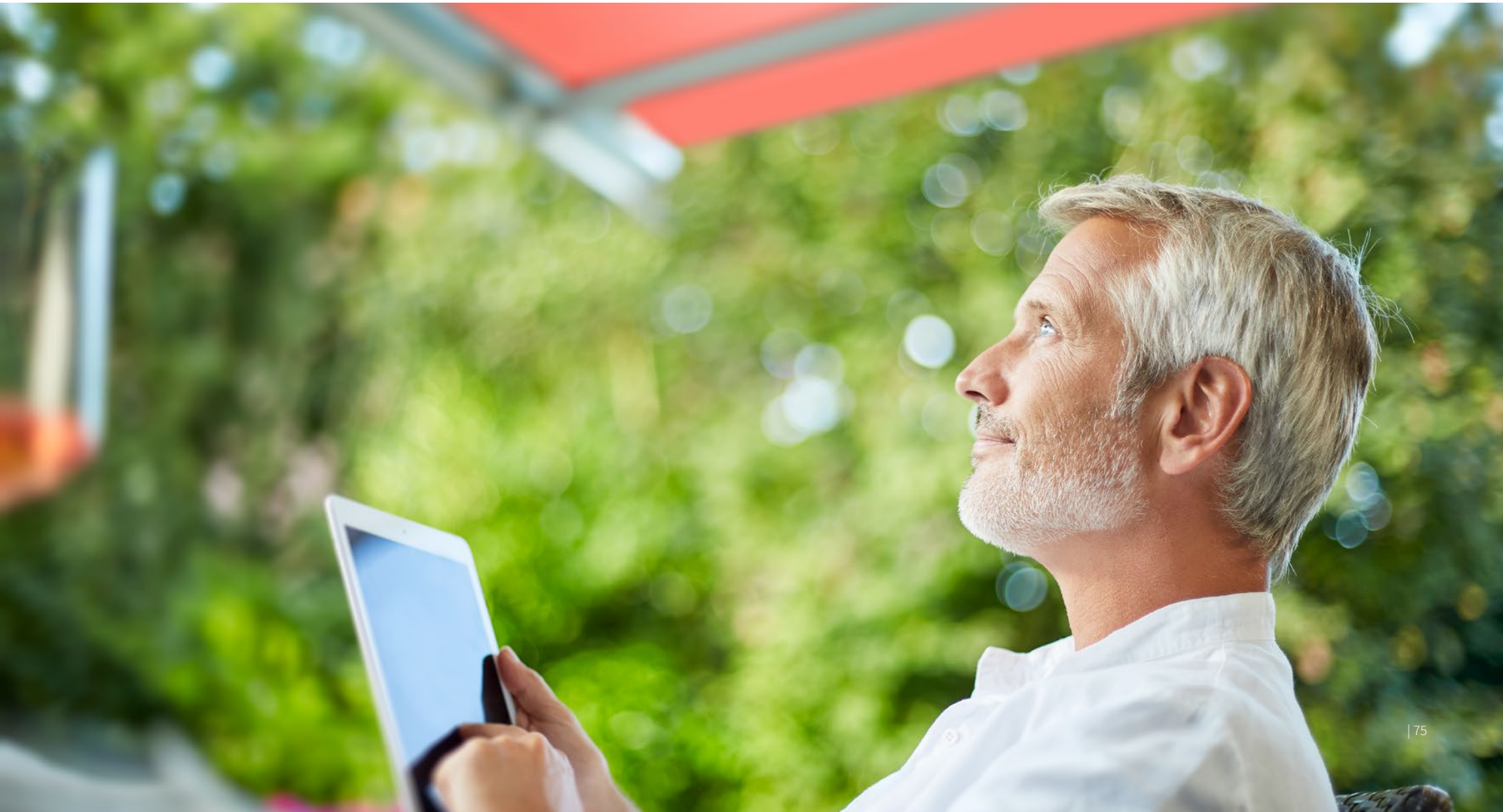


markilux vibrabox Intelligent, sensitive and independent of the mains. The vibrabox is an inertia sensor and depending on wind load an awning driven by radio-controlled motor will be retracted automatically to protect it.

Smart control Arrange your own personal patio atmosphere by controlling the awning, the lighting, heating and many more comfort accessories with the io technology of your smartphone or tablet – whether you are relaxing on your patio or away from home.

Ease of operation that meets the highest demands and any weather conditions The choice is yours: manual operation (spring-assisted on request), hard-wired motor or radio-controlled motor with remote control, are all possible on most models. You can even operate the system while you are away via smartphone or tablet. Better yet, why not put your feet up and add light, wind and rain sensors to provide automatic intelligent control of your markilux designer awning or blind?

Your markilux specialist dealer is at your disposal, should you have any questions regarding the operation of your markilux awning and will provide you with details on why awning motors with the markilux silentec technology are more popular than ever.



markilux Options.

Variations in specification according to the model.



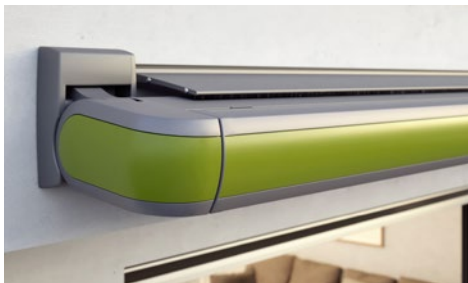
LED line Appealing, ambient light in the form of an LED line recessed into the underside of the cassette. Reserved and understated during the day. Dazzlingly beautiful and cosy in the evening.



LED spotlights Under the cassette, on the wall or in the front profile: LED spotlights that can be pivoted and dimmed create a lovely atmosphere on your patio in the evening.



stretch The perfect solution for narrow patios, recesses or balconies: Thanks to the two crossover arms even awnings with a narrow width can extend further.



Wall sealing profile The slim aluminium profile in the awning colour closes the gap between the awning and the wall, allowing the rain to be discreetly drained off the awning.



Polished chrome fittings Stylish end caps and fittings in a polished chrome finish add a noble look to your awning.

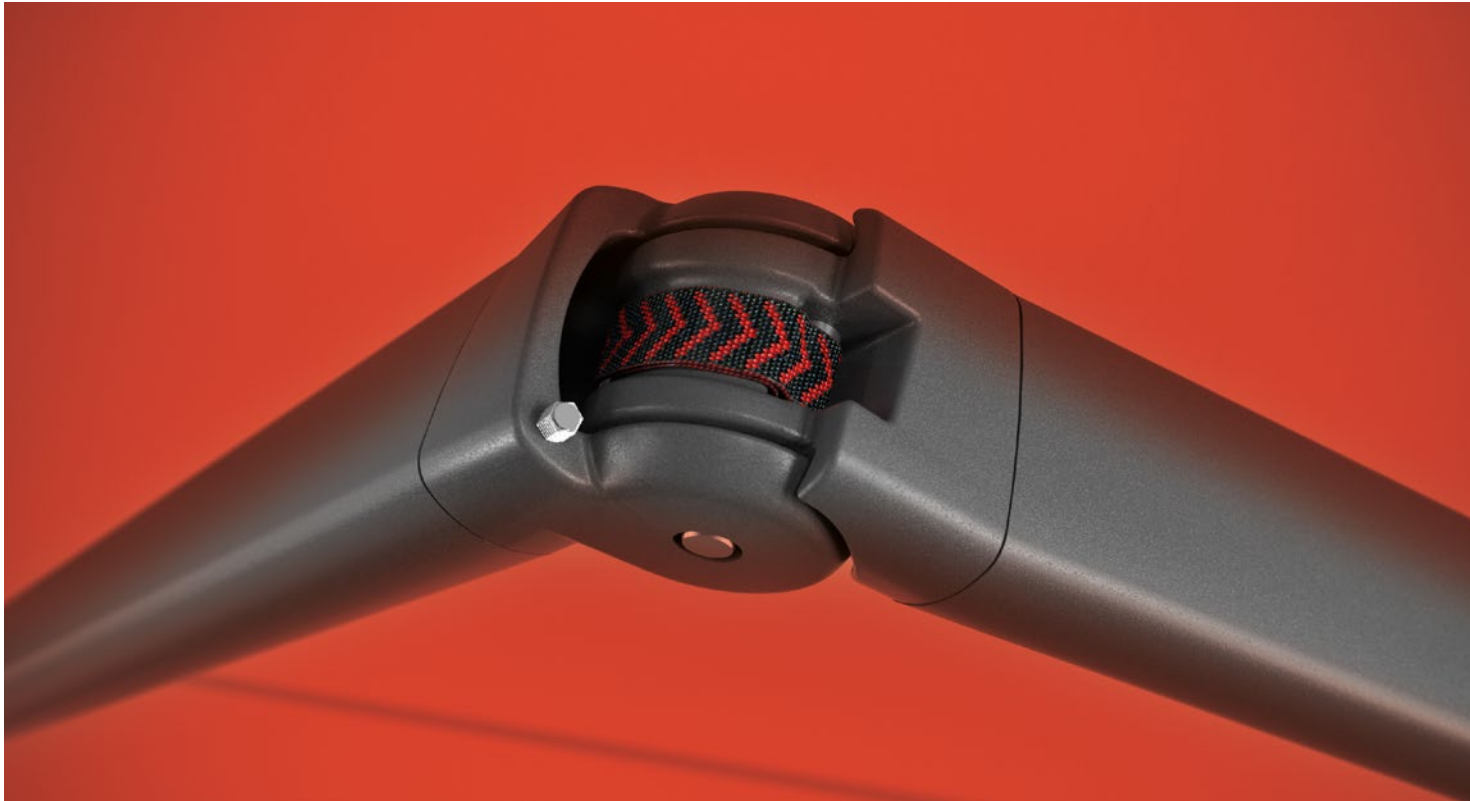


Colour variants and combinations Cassettes and front profile panels are available in attractive colours and can be combined at will.



Coupled awning Connecting two or more awnings together and operating them simultaneously offers even more shade. In folding-arm awnings a special roller blind in the centre covers the gap between the two awnings.

Arm technology Exceptionally long service life, quiet and meticulously designed to give a taut, well tensioned cover.



Bionic tendon markilux has developed the bionic tendon from high-tech fibres, and used nature as its inspiration to create optimum power transference to the front profile as well as a friction-free and virtually noiseless folding motion of the arms. The safety and durability of the arms also impressed when it achieved more than 50,000 arm flexions in a series of tests.



Twin steel-link chains The twin steel-link chains have been on the market for decades and have proven themselves in all types of weather: the twin round steel link chain, lies protected in the folding arm.



Gas piston The Gas Piston is an eye-catcher in stainless steel with the latest technology to match, the gas piston ensures optimum cover tension in any phase of extension.

markilux Accessories.

Light and warmth make outdoor living a veritable pleasure.



markilux LED spotline Turn night into day. The elegant light bar in a powder-coated aluminium housing, that can be fitted almost anywhere. The LED spotlights can be tilted and swivelled. Available in two sizes: 180 cm with 3 spotlights and 300 cm with 5 spotlights.



markilux Infrared heater Feel the warmth in an instant and enjoy the evening outside for even longer. In a protected housing. Energy efficient and with a long service life. 2500 Watt, dimmable in three stages.

markilux Shadeplus Simply block out the glare from a low-lying sun and the glances of inquisitive neighbours and capture the warmth of the day in the evening. The additional awning cover is lowered vertically downwards from the front profile to create a wonderfully private room outdoors. Depending on the model, it is also available with a hard-wired motor or with remote control.

It is impossible not to be enthusiastic The numerous markilux options available set new standards for the stylish shading of your favourite spot in the garden. For complete information and competent advice speak to your markilux specialist dealer or go to [markilux.com](https://www.markilux.com)



markilux Designer awnings

markilux MX-1
The Ultimate One



markilux MX-1 compact
The Petite Ultimate One



markilux ES-1
The Unique One



markilux 6000
The Individual One



markilux 5010
The Family-friendly One



markilux 970
The Linear One



Max. width × projection	700 × 437 cm	700 × 415 cm	650 × 300 cm 600 × 350 cm	700 × 400 cm	700 × 400 cm	600 × 300 cm 500 × 350 cm
Operation type optional	Radio-controlled motor* silentec motor	Radio-controlled motor* silentec motor	Radio-controlled motor*	Manual operation servo manual operation hard-wired motor silentec motor radio-controlled motor*	Manual operation servo manual operation hard-wired motor silentec motor radio-controlled motor*	Manual operation servo manual operation hard-wired motor radio-controlled motor*
Arm technology optional	Bionic tendon	Bionic tendon	Gas piston	Bionic tendon	Twin steel-link chains bionic tendon	Bionic tendon
Fixture optional	Face fixture	Face fixture	Face / top / eaves	Face / top / eaves wall sealing profile	Face / top / eaves wall sealing profile	Face / top / eaves reveal
Optional accessories **						
	LED-line/spotlights in front profile	LED-line/spotlights in front profile	valance	LED spotlights in front profile end cap insert stainless steel mesh	End caps front profile in polished chrome	LED line in the cassette LED spotlights under cassette
	LED ambient lighting	LED ambient lighting		frame in polished chrome	shadeplus	anodised front panels
	LED spotlights in the canopy numerous colour combinations	numerous colour combinations		shadeplus / drop valance	valance	shadeplus
	shadeplus / drop valance	shadeplus / drop valance		valance	coupled awning	
	valance	valance		coupled awning		

Page 14

Page 16

Page 20

Page 22

Page 24

Page 26

markilux MX-3
The Curved One



600 × 300 cm
500 × 350 cm

Manual operation

servo manual operation
hard-wired motor
radio-controlled motor*

markilux 990
The Slim One



500 × 300 cm

Manual operation

servo manual operation
hard-wired motor
radio-controlled motor*

markilux 3300
The Practical One



700 × 400 cm

Manual operation

servo manual operation
hard-wired motor
silentec motor
radio-controlled motor*

markilux 1710
The Classic One



700 × 350 cm

Manual operation

servo manual operation
hard-wired motor
radio-controlled motor*

markilux 1600
The Elegant One



710 × 400 cm

Manual operation

servo manual operation
hard-wired motor
radio-controlled motor*

markilux 930
The Mobile One



500 × 300 cm

Manual operation

servo manual operation
hard-wired motor
radio-controlled motor*

markilux 1700
The Open One



700 × 400 cm

Manual operation

servo manual operation
hard-wired motor
radio-controlled motor*

Bionic tendon

Twin steel-link chains

bionic tendon

Bionic tendon

Bionic tendon

Twin steel-link chains

bionic tendon

Twin steel-link chains

Bionic tendon

Face / top / eaves

wall sealing profile

Face / top / eaves

wall sealing profile

Face / top / eaves

niche fixture
wall sealing profile

Face / top / eaves

wall sealing profile

Face / top / eaves

wall sealing profile

Face / top

Face / top / eaves

LED line in the cassette

end cap inserts

valance

polished chrome end caps

LED spotlights in front profile
(markilux 1650)

valance

polished chrome end caps

LED spotlights under cassette

polished chrome

coupled awning

valance

end caps in polished chrome

valance

colour front panels and
end cap inserts

valance

coupled awning
stretch version

shadeplus / drop valance

coupled awning

valance

coupled awning

stretch version

stretch version

Page 28

Page 32

Page 34

Page 36

Page 40

Page 42

Page 44



markilux 790 | The Upright One

Extension: max. 450 cm, height: 90 – 250 cm,
Manual operation, can be fitted to a wall or in a niche
Options: angled top edge and mobilfix, see page 46

markilux
safe timeless beautiful

markilux Awning systems

markilux pergola



markilux pergola compact



markilux planet



markilux syncra



markilux construct



markilux markant



Max. width × projection	600 × 450 cm 500 × 600 cm	450 × 400 cm	600 / 610 × 300 cm 500 / 510 × 350 cm	up to 60 m² depending on awning model	almost unlimited	600 × 600 cm (2 fields) 300 × 600 cm (1 field)
Awning System	Pergola tracfix cover guidance by way of lateral guide tracks on slim posts	Pergola tracfix cover guidance by way of lateral guide tracks on slim posts	Awning parasol with one markilux designer awning as desired	Awning stand system with two round / angular posts and one / two markilux designer awnings or pergolas as desired	Frame system modular and flexible	Textile weather protection free-standing, purist in design, on four posts with integrated designer awning(s)
Operation type optional	Motor silentec motor radio-controlled motor*	Motor radio-controlled motor*	Depending on awning model	Depending on awning model	Depending on awning model	Radio-controlled motor*
Arm technology	—	—	Depending on awning model	Depending on awning model	Depending on awning model	—
Fixture type	To the wall / soffit / eaves wall sealing profile	To the wall / soffit / eaves wall sealing profile	Free-standing on concrete footings	Free-standing on concrete footings or stabilisation boxes	Free-standing on concrete footings	Free-standing on concrete footings or with wall connection
Options **	LED line / LED spotlights shadeplus round or square posts adjustable posts stabilisation boxes coupled awning	LED line / LED spotlights shadeplus (manual) round or square posts adjustable posts stabilisation boxes	depending on awning model flex (335° pivoting) base plate covers shadeplus	depending on awning model round or square posts uno (with only one awning) flex (with stabilisation boxes) base plate covers coupled awning	depending on awning model round or square posts triangular windows for the gable ends base plate covers	LED line / LED spotlights vertical cassette blinds wall connection
	Page 50	Page 52	Page 56	Page 58	Page 60	Page 62



Put only the best between you and the sun: Create the most seductive shade in the world. markilux designer awnings are a symbiosis of innovative technology and the pinnacle of quality and have received both acclaim and multiple awards. Ideas, detailed information, professional advice and all exquisite markilux awning cover patterns can be found in your specialist dealer's showroom and at [markilux.com](https://www.markilux.com)

[markilux.com](https://www.markilux.com)

markilux
safe timeless beautiful

Designing for patient safety

Designing for patient safety

Designing for patient safety

Designing for patient safety

Designing for patient safety

Designing for patient safety

Designing for patient safety