



Vertical cassette blind

## **markilux 720/820**

Compact cassette blind with angled guide rails.

# Product characteristics

Wind resistance class 2

Beaufort 5 → 7.5–10.4 m/s → 28–37 km/h → 17–23 mph

01  
02  
03  
04  
05  
06  
07  
**08**  
09  
10  
11  
12  
13  
14  
15  
16  
17  
18  
19  
20

markilux 720  
face fixture



markilux 820  
face fixture



side view, face fixture,  
standard gearbox operation

side view, motor operation <sup>1)</sup>

side view, face fixture,  
standard gearbox operation

side view, motor operation <sup>1)</sup>



reveal fixture



<sup>1)</sup> optional configuration

## Product characteristics

### Description

- vertical blind with angled guide rails and gravity-fed tensioning system – for areas up to 10.5 m<sup>2</sup>.

### Special features

- fully encompassing cassette that protects the cover perfectly
- compact cassette profile that lends an attractive appearance to the unit
- option of manual operation from inside the building, drive shaft passes through the wall
- fixture directly through the angled rails – the cassette is positioned right against the wall

### Dimensions

- single unit: 74 cm – 300 cm in width, maximum height 350 cm
- maximum width × height: 300 cm × 350 cm
- intermediate sizes are available

### Roller tube and lateral bearings

- round roller tube Ø 63 mm with keyway, galvanised steel
- the roller tube bearing is made of stainless steel

### Blind profiles

- extruded aluminium, in façade quality, powder coated
- markilux 720: cassette profile in one piece, square, height × depth 95 mm × 95 mm
- markilux 820: cassette profile in two pieces, round tear-shaped, Ø 115 mm
- angled guide rails, width × depth 30 mm × 49 mm
- front profile round, Ø 32 mm

### Side caps

markilux 720:

- the cassette end caps are made of high-quality plastic, powder coated
- the front profile end caps are made of high-quality plastic, powder coated
- the bottom profile end caps are made of high-quality plastic, dyed right through, black

markilux 820:

- the cassette end caps are made of high-quality plastic, powder coated
- the front profile end caps are made of high-quality plastic, powder coated
- the bottom profile end caps are made of high-quality plastic, dyed right through, black

### Fixture brackets

- self-supporting cassette attached to the top of the angled guide rails
- without brackets, fixture directly through the angled guide rails
- face or reveal fixture

01

02

03

04

05

06

07

08

09

10

11

12

13

14

15

16

17

18

19

20

01 **Frame colours**

02 markilux blind colours without surcharge

03 traffic white RAL 9016

04 metallic aluminium RAL 9006

05 grey brown, similar to RAL 8019



08

09 off-white textured finish, 5233 <sup>1)</sup>

10 stone grey metallic, 5215 <sup>1)</sup>

11 anthracite metallic, 5204 <sup>1)</sup>



15

16 Havana brown textured finish, 5229 <sup>1)</sup>



**Non-standard powder-coated finish**

Bespoke frame colours at a surcharge – matt, metallic and pearl finishes as well as other colour ranges (DB, Tiger etc.) on request. All frame colours are available at a surcharge with enhanced corrosion protection.

<sup>1)</sup> textured finish

Colours may differ slightly from those depicted in both hue and finish.

## Dimensions and configuration options

Single unit

|                  |     | Overall blind width |     |     |     |     | Blind minimum width |                        |
|------------------|-----|---------------------|-----|-----|-----|-----|---------------------|------------------------|
|                  |     | 100                 | 150 | 200 | 250 | 300 | Hard-wired motor    | Radio-controlled motor |
| Order dimensions |     | 50                  | 101 | 151 | 201 | 251 | 75                  | 74                     |
|                  |     | 100                 | 150 | 200 | 250 | 300 |                     |                        |
| AH               | 120 |                     |     |     |     |     | 75                  | 74                     |
|                  | 160 |                     |     |     |     |     |                     |                        |
|                  | 200 |                     |     |     |     |     |                     |                        |
|                  | 250 |                     |     |     |     |     |                     |                        |
|                  | 300 |                     |     |     |     |     |                     |                        |
|                  | 350 |                     |     |     |     |     |                     |                        |

AH = unit height

dimensions in cm

| Operation                             | standard | optional | Coupled Blind  |
|---------------------------------------|----------|----------|--|
| crank handle                          | ✓        | —        | not available  |
| crank handle, operation from the rear | —        | ✓        |  |
| crank handle, interior operation      | —        | ✓        |  |
| hard-wired motor                      | —        | ✓        | Optional accessories   |
| radio-controlled motor io, 868 MHz    | —        | ✓        | automatic controls (light, wind, rain)   |
| radio-controlled motor RTS, 433 MHz   | —        | ✓        | <b>N.B!</b> Important background information can be found in the chapter "Optional Accessories". |

| Blind cover         | fabric range no.  | standard | optional | model     | overall blind width | unit height | cover manuf. |    |
|---------------------|---|----------|----------|-----------|---------------------|-------------|--------------|----|
| sunvas              | 301.. / 309..-315..   | ✓        | —        | 720       | ≤ 300               | LN          |              |    |
|                     |   |          |          | 820       |                     |             |              |    |
| sunsilk             | 324.. / 325.. / 328.. / 369..   | ✓        | —        | 720       | ≤ 300               | LN          |              |    |
|                     |   |          |          | 820       |                     | LN          |              |    |
| perfotex            | 331.. / 332..   | ✓        | —        | 720       | ≤ 250               | LN          |              |    |
|                     |   |          |          | 820       |                     | LN          |              |    |
| sunvas (250 cm)     | 31008, -09, -13, -16, -18, -25, 27, -28, -31, -36, -37, -57, -58, 31109, -14, -17 | ✓        | —        | 720 / 820 | ≤ 250               | N           |              |    |
|                     |   |          |          |           |                     |             |              |    |
| transolair          | 338..   | —        | ✓        | 720 / 820 | ≥ 251 ≤ 400         | ≤ 240       | N            |    |
|                     |   |          |          | 720 / 820 | ≥ 251 ≤ 400         | ≥ 241       | QN           |    |
| transolair (120 cm) | 339..   | —        | ✓        | 720       | ≤ 300               | LN          |              |    |
|                     |   |          |          | 820       |                     | LN          |              |    |
| sunvas (320 cm)     | 31008, -09  | ✓        | —        | 720 / 820 | ≤ 320               | N           |              |    |
|                     |   |          |          | 720 / 820 | ≥ 321 ≤ 400         | ≤ 310       | N            |    |
| vuscreen Alu        | 317..   | —        | ✓        | 720       | ≥ 321 ≤ 400         | ≥ 311       | QN           |    |
|                     |   |          |          | 820       |                     | ≤ 250       | N            |    |
|                     |   |          |          | 820       |                     | ≥ 251 ≤ 400 | ≤ 240        | N  |
|                     |   |          |          | 820       |                     | ≥ 251 ≤ 400 | ≥ 241        | QN |
| Soltis Perform 2    | 92-20..   | —        | ✓        | 720 / 820 | ≤ 185               | N           |              |    |
|                     |   |          |          | 720 / 820 | ≥ 186               | ≥ 173       | QN           |    |
| perla               | 370..   | —        | —        | —         |                     |             |              |    |
| perla FR            | 374.. / 375..   | —        | —        | —         |                     |             |              |    |

LN = vertical seams, panel width usually 120 cm

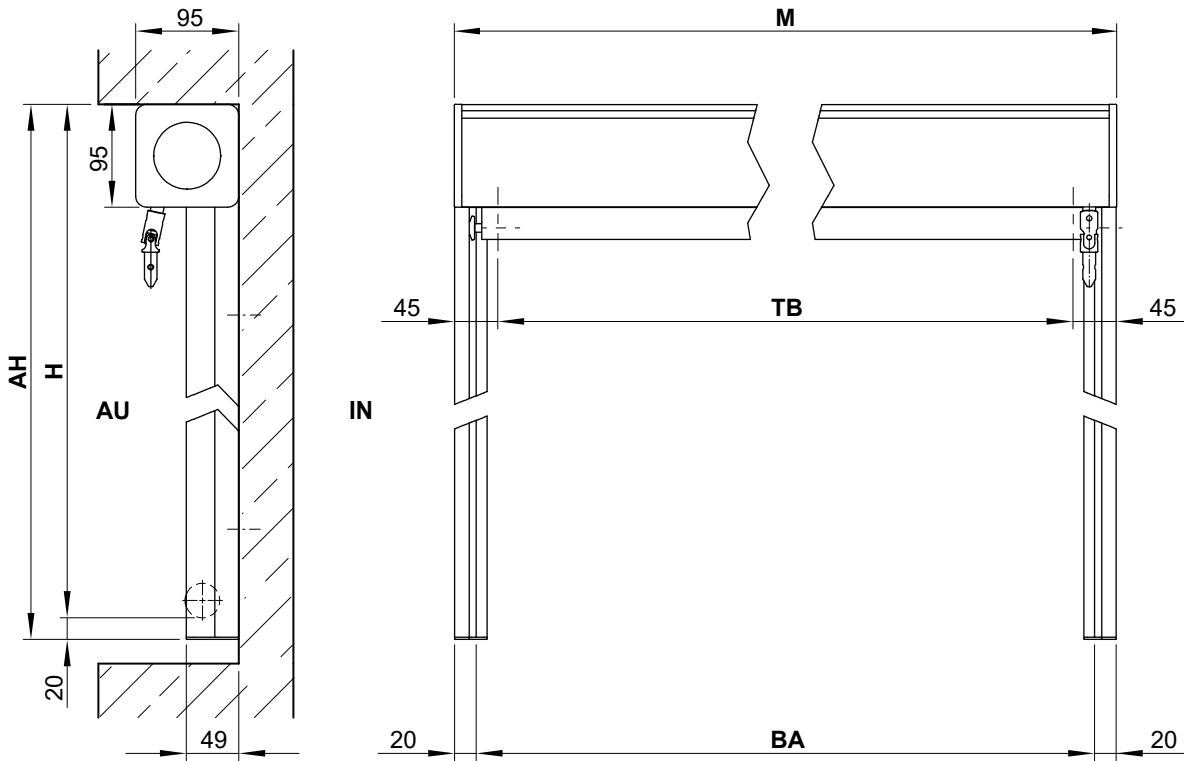
QN = horizontal seam

N = seamless

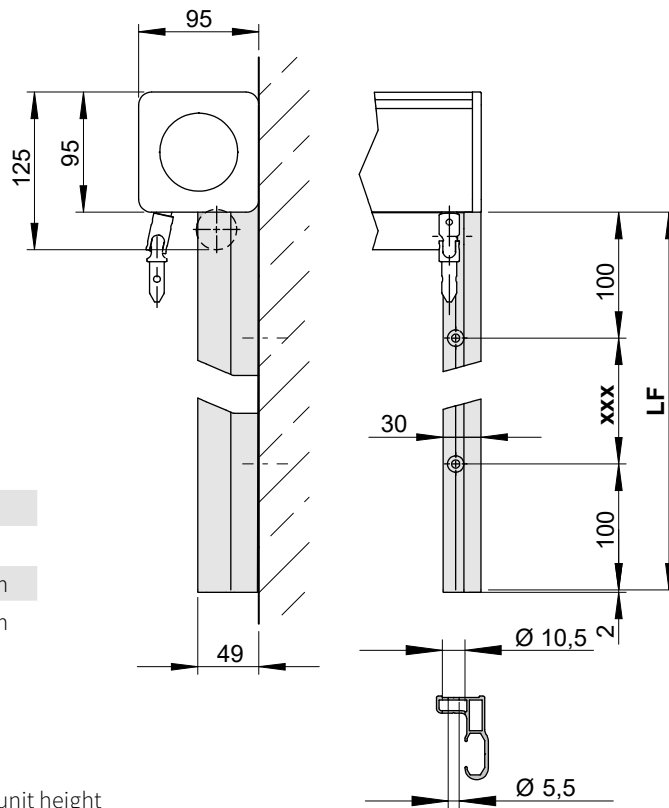
dimensions in cm

# markilux 720

## Dimension overview



## Face fixture



| ABO xxx | LF           |
|---------|--------------|
| 2       | 1-1500 mm    |
| 3       | 1501-3000 mm |
| 5       | 3001-3500 mm |

**AH** = order dimension = unit height

**AU** = exterior

**ABO** = number of drill holes in the range xxx

**BA** = width between fixture points

**H** = unit height

**IN** = interior

**LF** = length of the guide rail

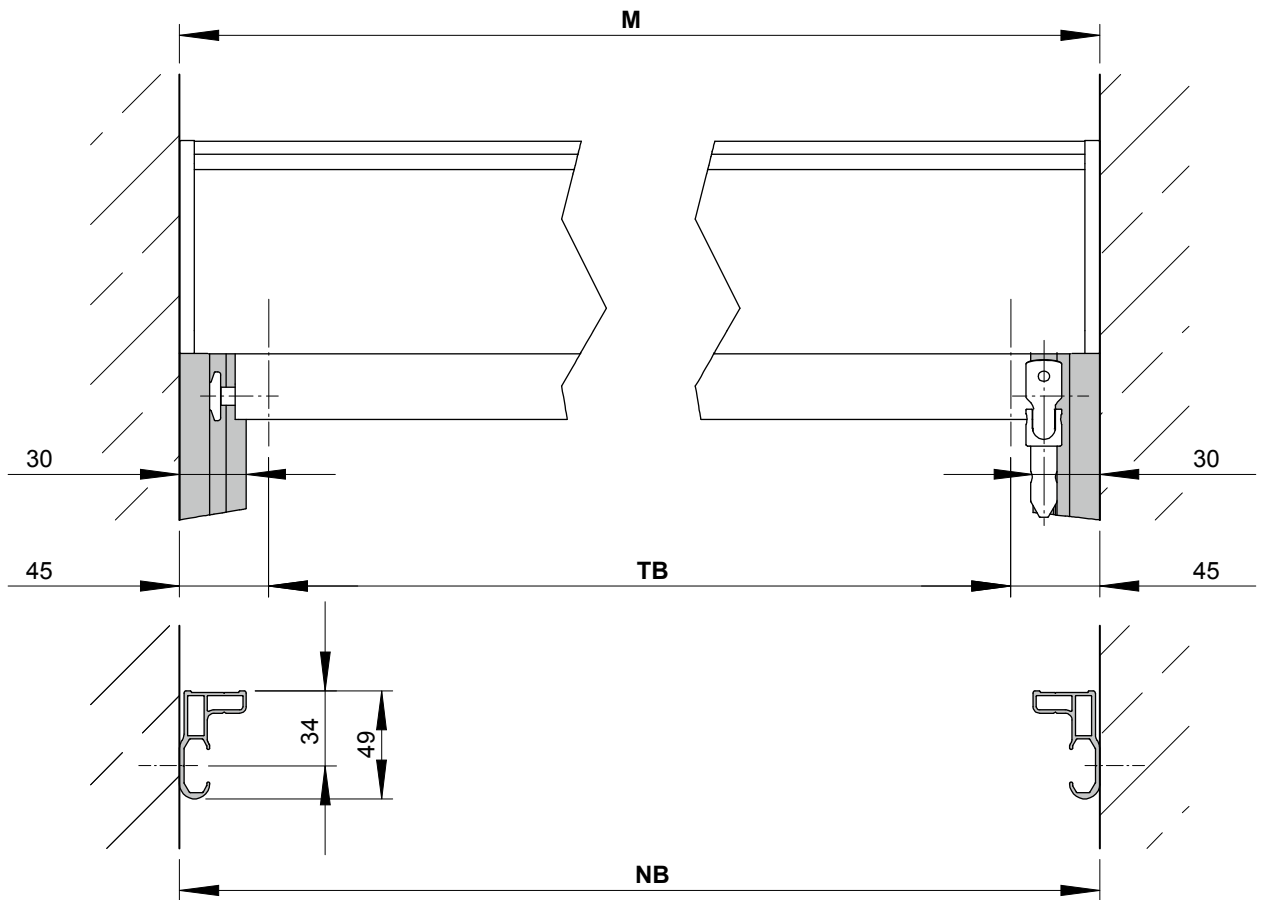
**M** = order dimension = overall blind width

**TB** = cover width

dimensions in mm

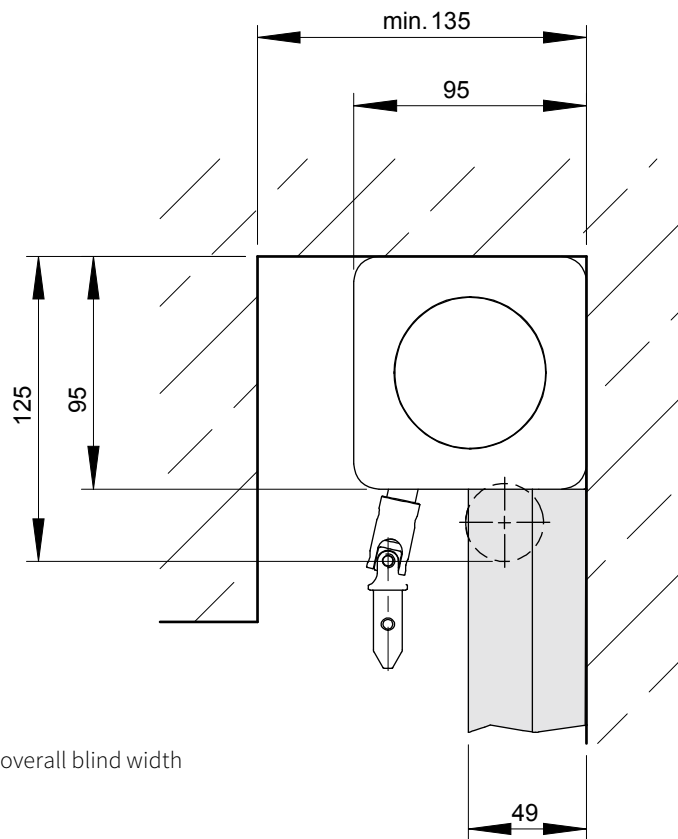
# markilux 720

Reveal fixture, gearbox / motor operation



01  
02  
03  
04  
05  
06  
07  
**08**  
09  
10  
11  
12  
13  
14  
15  
16  
17  
18  
19  
20

Reveal fixture in a top window well, gearbox operation



- M** = *order dimension* = overall blind width
- NB** = reveal width
- TB** = cover width

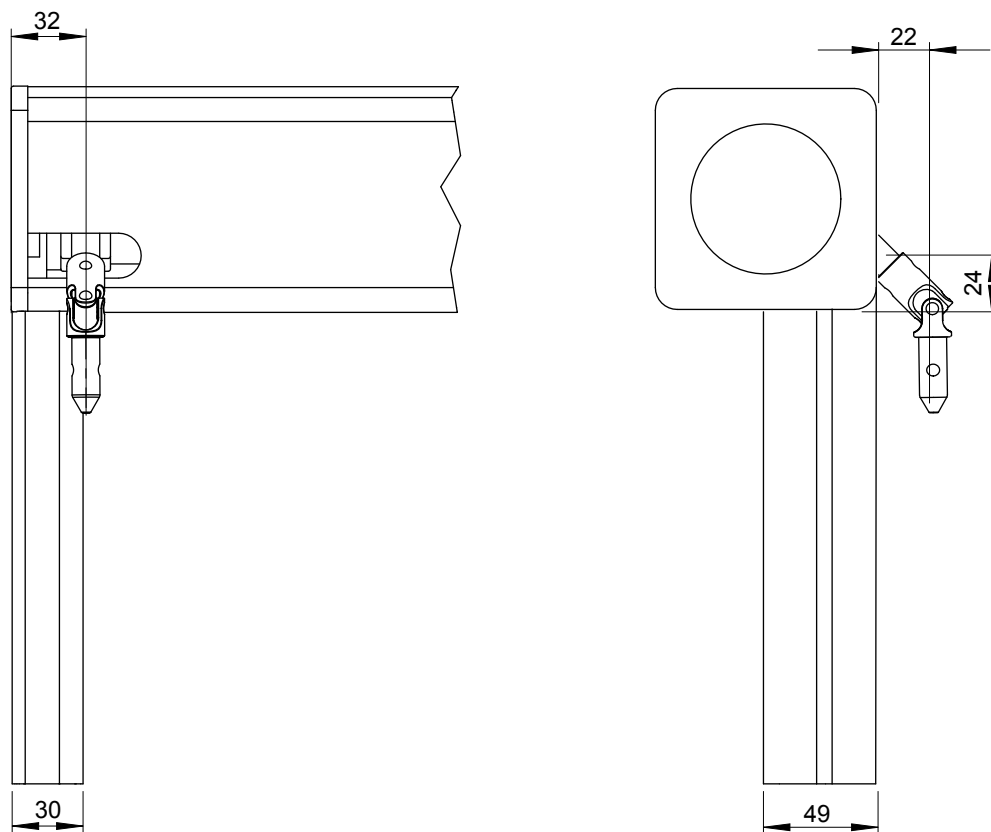
dimensions in mm



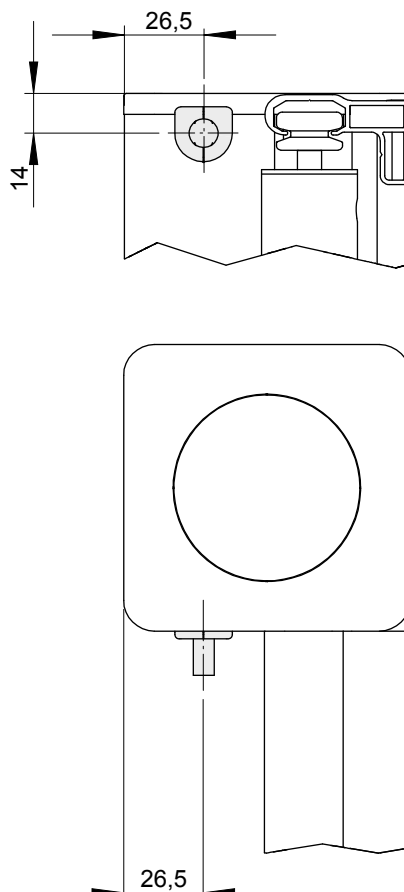


# markilux 720

Manual operation from the rear



Motor cable exit point

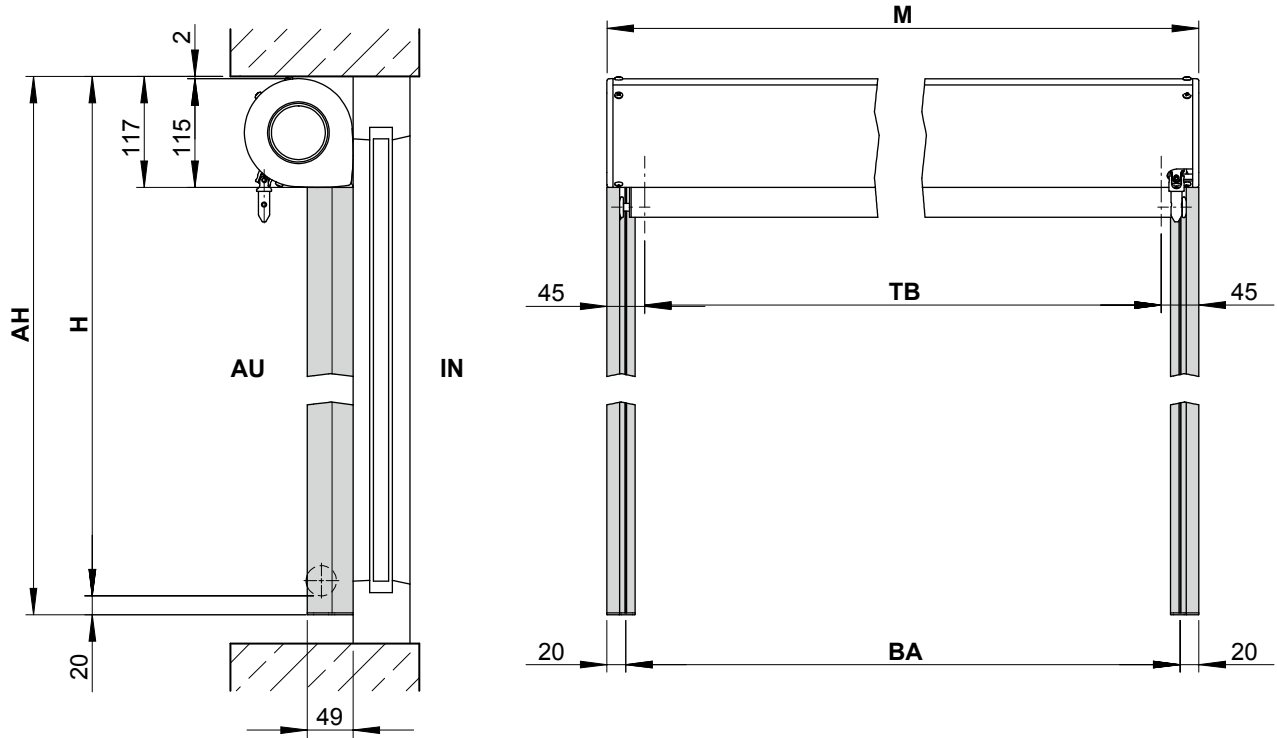


dimensions in mm

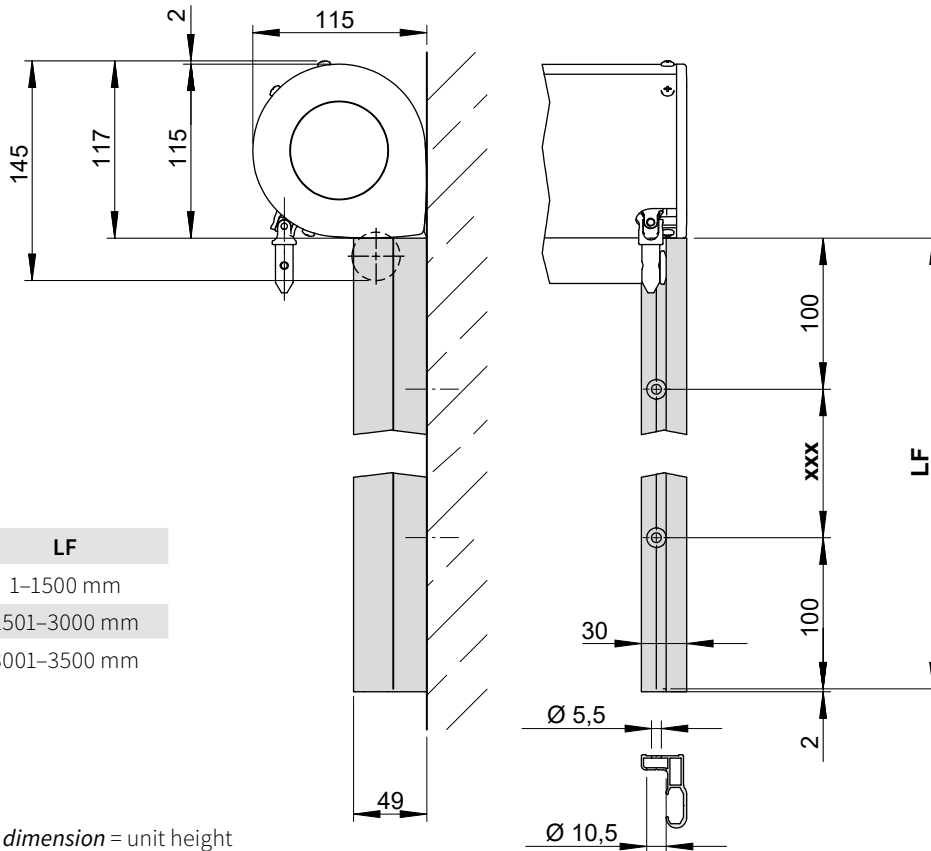
- 01
- 02
- 03
- 04
- 05
- 06
- 07
- 08**
- 09
- 10
- 11
- 12
- 13
- 14
- 15
- 16
- 17
- 18
- 19
- 20

# markilux 820

## Dimension overview



## Face fixture



| ABO xxx | LF           |
|---------|--------------|
| 2       | 1-1500 mm    |
| 3       | 1501-3000 mm |
| 5       | 3001-3500 mm |

**AH** = order dimension = unit height

**AU** = exterior

**ABO** = number of drill holes in the range xxx

**BA** = width between fixture points

**H** = unit height

**IN** = interior

**LF** = length of the guide rail

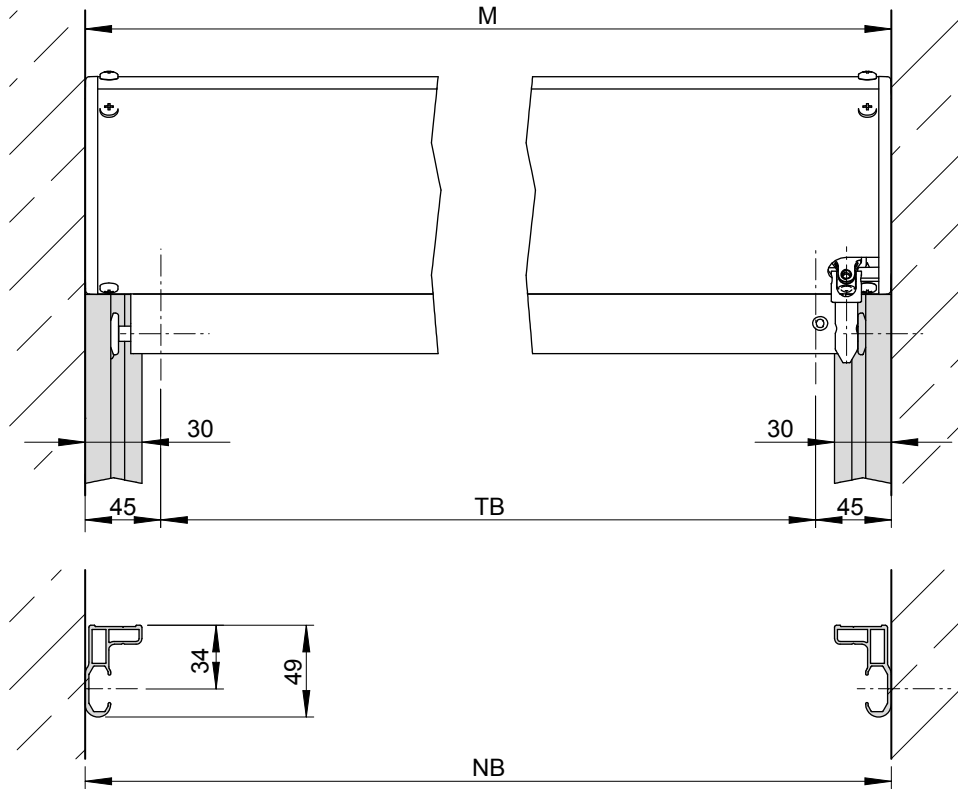
**M** = order dimension = overall blind width

**TB** = cover width

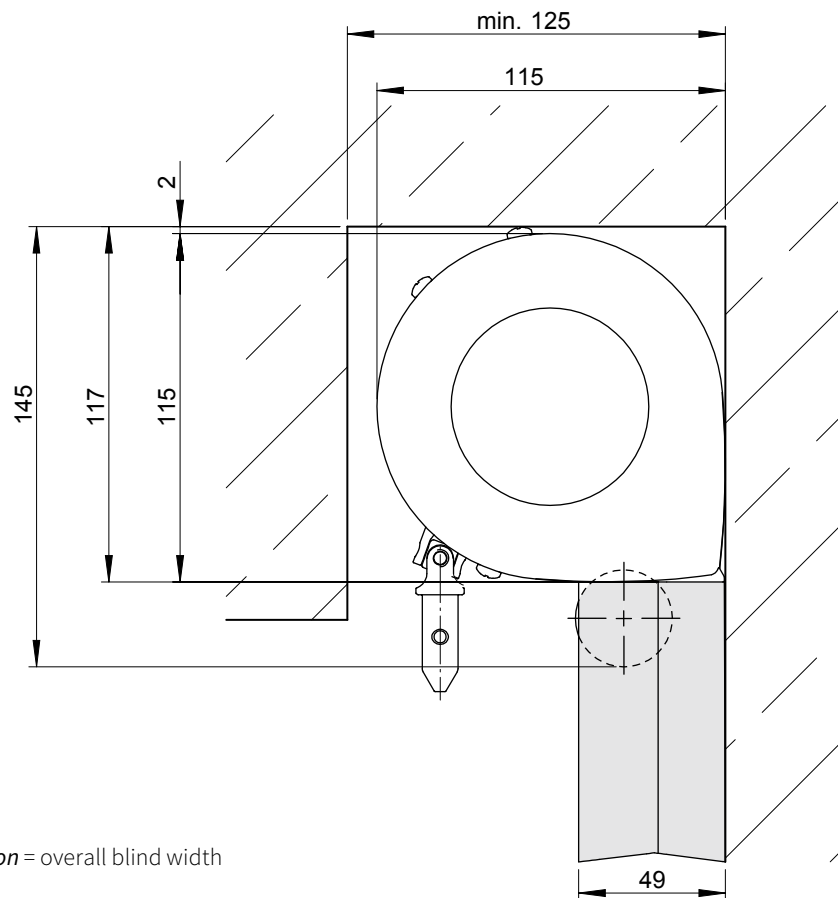
dimensions in mm

# markilux 820

Reveal fixture, gearbox / motor operation



Reveal fixture in a window well, gearbox operation



- M** = *order dimension* = overall blind width
- NB** = reveal width
- TB** = cover width

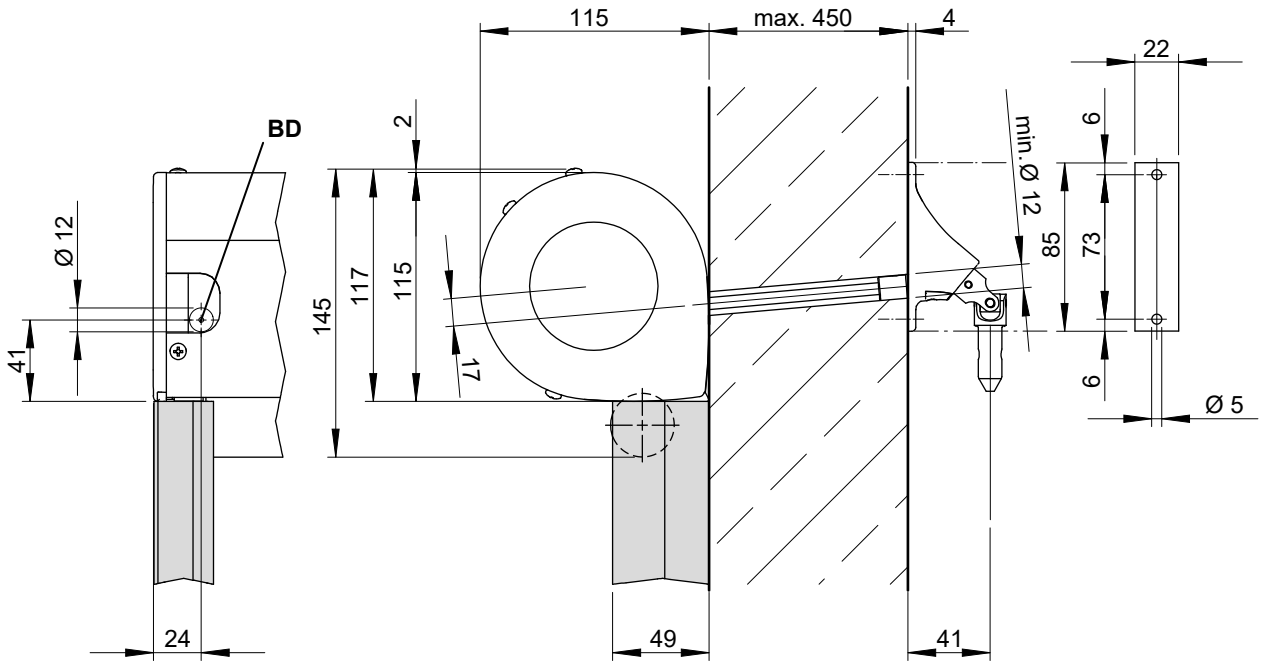
dimensions in mm

01  
02  
03  
04  
05  
06  
07  
**08**  
09  
10  
11  
12  
13  
14  
15  
16  
17  
18  
19  
20

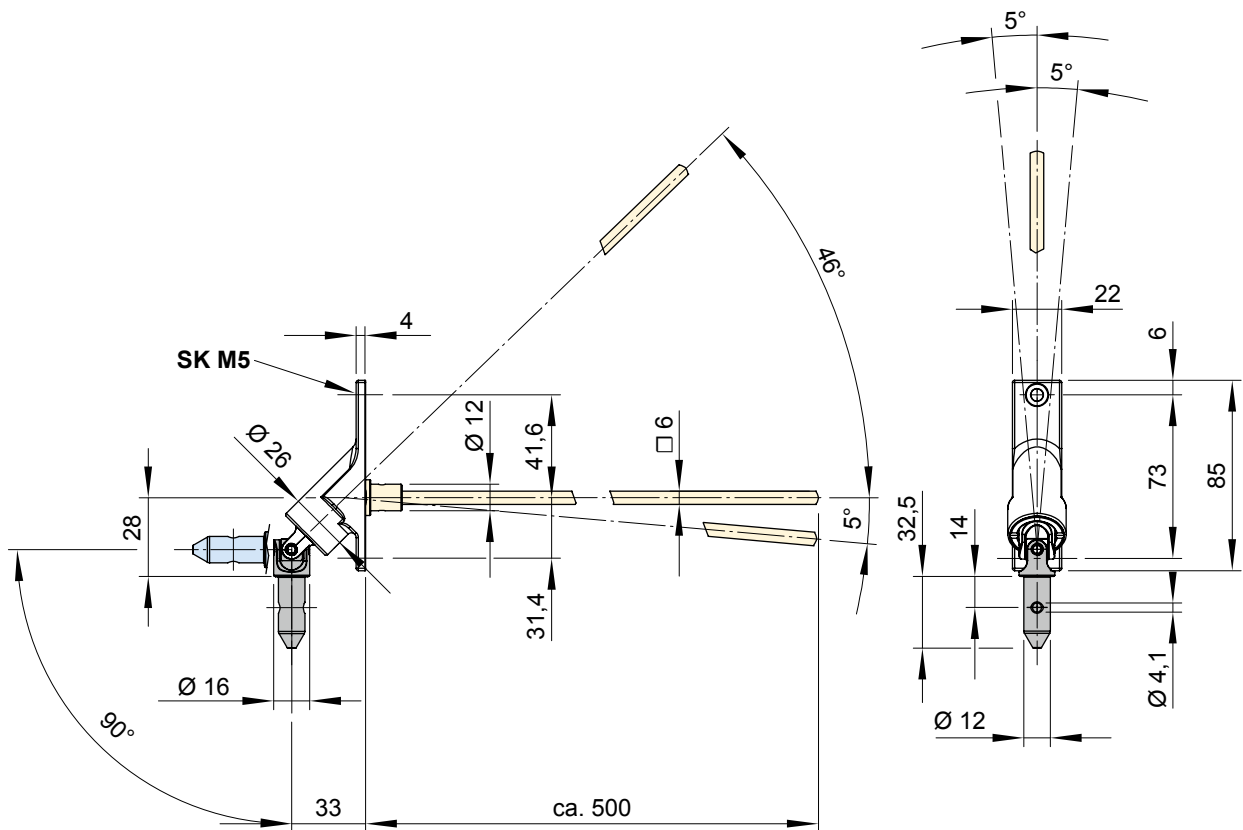
01  
02  
03  
04  
05  
06  
07  
08  
09  
10  
11  
12  
13  
14  
15  
16  
17  
18  
19  
20

# markilux 820

Face fixture, interior operation



Handle for interior operation

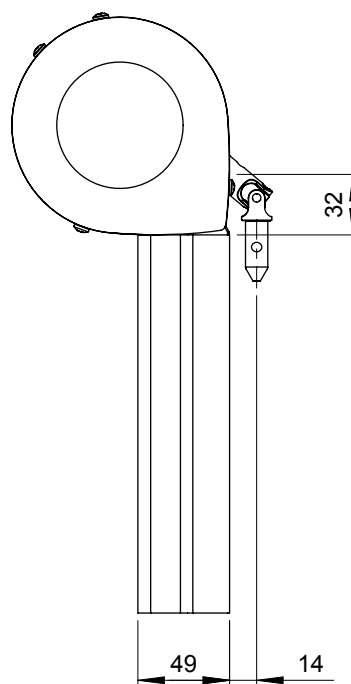
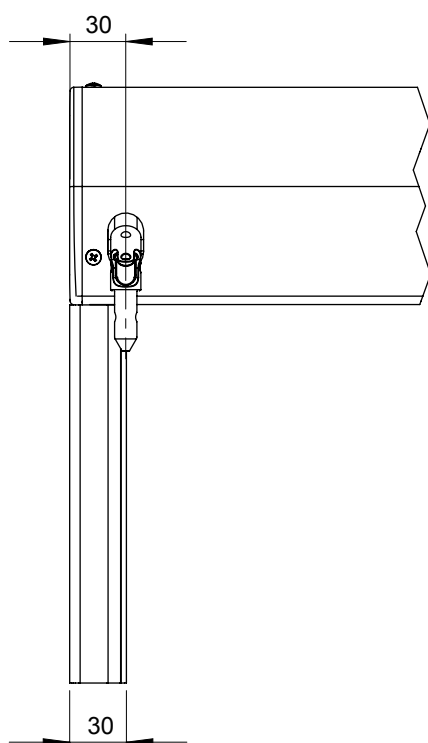


- BD = horizontal drill hole
- SK = chase out depth

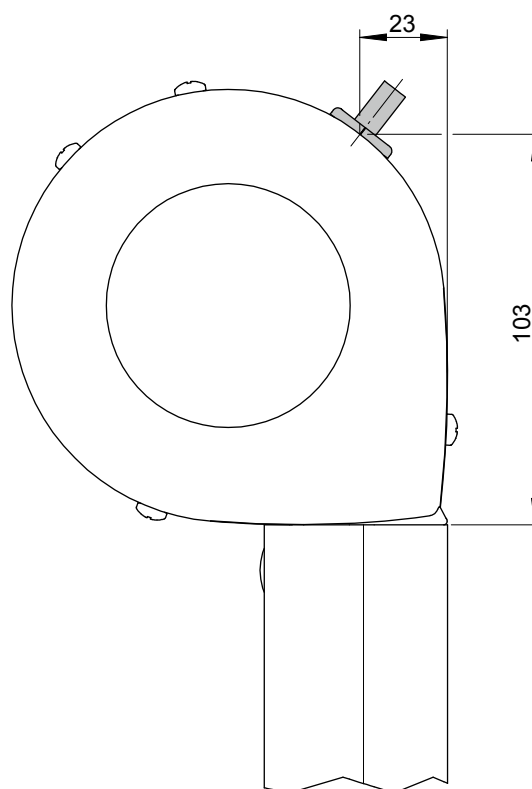
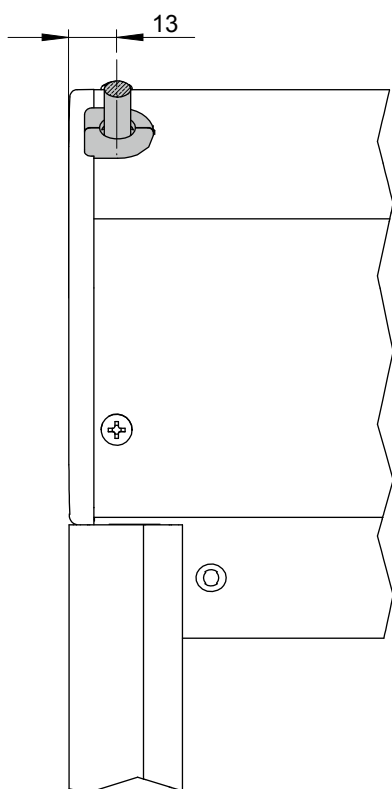
dimensions in mm

# markilux 820

Manual operation from the rear



Motor cable exit point



dimensions in mm

- 01
- 02
- 03
- 04
- 05
- 06
- 07
- 08**
- 09
- 10
- 11
- 12
- 13
- 14
- 15
- 16
- 17
- 18
- 19
- 20

01

02

03

04

05

06

07

**08**

09

10

11

12

13

14

15

16

17

18

19

20