



Exterior awning

markilux 8850

Exterior awning for conservatories with bevel-edged roofs.



markilux.com

markilux
safe timeless beautiful

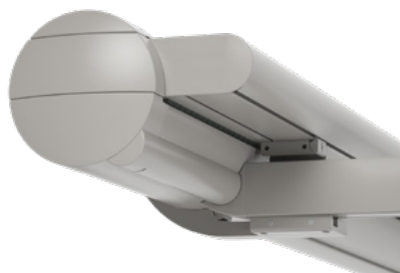
Product characteristics

Wind resistance class 2

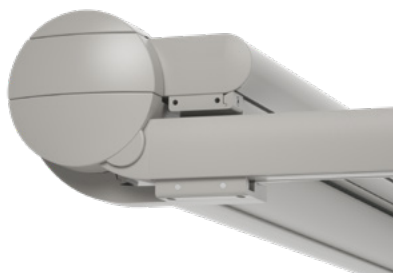
Beaufort 5 → 7.5–10.4 m/s → 28–37 km/h → 17–23 mph



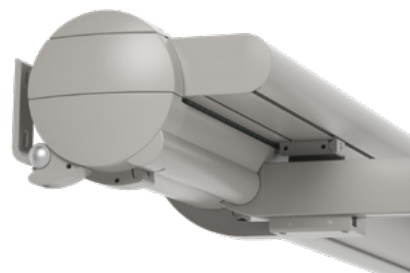
1 bottom fixture, indented guide track



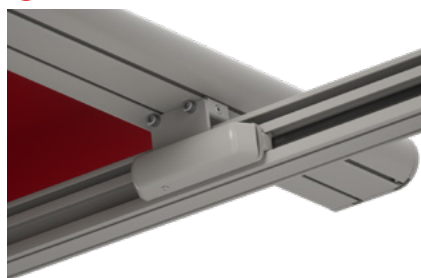
1 bottom fixture, guide track moved out as far as possible



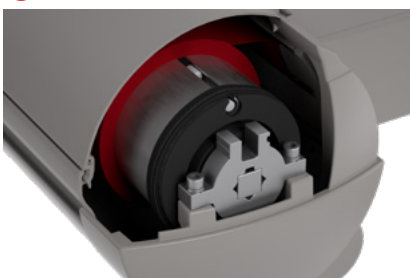
2 face fixture, indented guide track



3 view of the bogey on the front profile



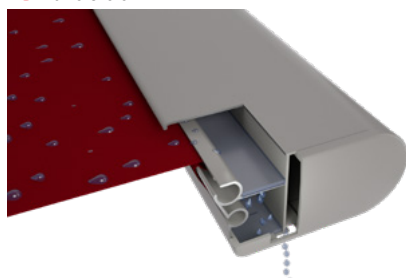
4 maintenance opening in the cassette



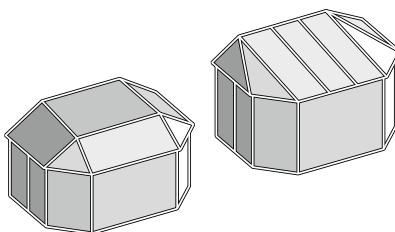
4 awning retracted, cover completely protected



5 hidden gutter with water drainage to the side



examples of its use on various conservatory shapes



1) optional configuration

Product characteristics

Description

- exterior awning for bevel-edged conservatories.

Special features

- the cover runs in and out above the guide tracks – the cover appearance from the exterior is ideal and gives more flexibility when fitting
- guide tracks can be indented up to 100 cm – if the system is asymmetrical the difference left and right may not exceed 40 cm
- the guide tracks can overrun the last bracket position by up to 100 cm – giving more sun protection
- fully encompassing cassette that protects the cover perfectly
- the tried and tested tensioning system – with drive belts and integrated gas pistons – delivers optimum cover tension in any phase of extension
- optional wall sealing profile – to cover the gap between wall and awning cassette

Dimensions

- single unit: width 80 cm – 650 cm, maximum extension 500 cm (depending on the width)
- maximum dimensions width × extension: 500 × 500 cm / 600 × 450 cm / 650 × 400 cm
- intermediate sizes are available

Roller tube and lateral bearings

- round roller tube Ø 95 mm with keyway, galvanised steel – excellent stability, ensures near perfect cover performance even at the largest widths
- the roller tube bearing is made of die-cast aluminium

Awning profiles

- extruded aluminium, in façade quality, powder coated
- cassette profile in two pieces, round, Ø 187 mm
- guide tracks angular, width × height 60 mm × 70 mm
- front profile rounded at the front, depth × height 150 mm × 70 mm

Side caps

- the cassette end caps with opening for the guide tracks are made of die-cast aluminium, powder coated
- the top maintenance cover is made of high-quality plastic, powder coated
- the front profile end caps are made of high-quality plastic, powder coated
- the guide track end caps are made of high-quality plastic, powder coated

Fixture brackets

- extruded aluminium, powder coated
- cassette brackets: bottom fixture, face fixture
- guide track brackets: raised bottom fixture, flat track bracket
- standard bracket heights: 20 mm / 105 mm (bespoke heights can be ordered)
- other accessories are available

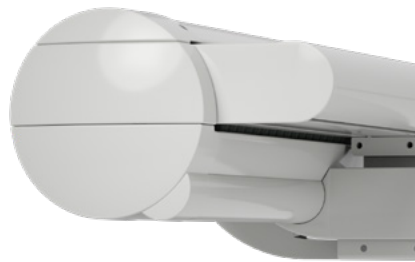
01 **Frame colours**

02 markilux frame colours without surcharge

03 traffic white RAL 9016



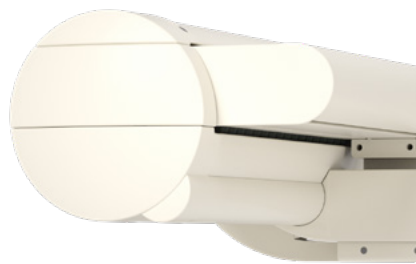
metallic aluminium RAL 9006



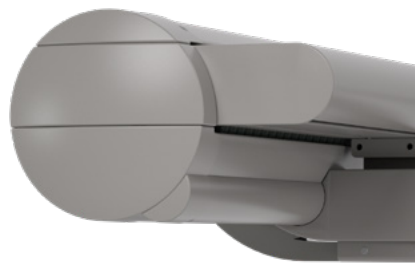
grey brown, similar to RAL 8019



07 off-white textured finish, 5233 ¹⁾



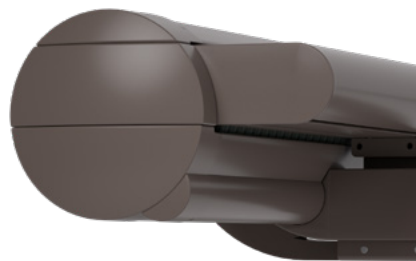
stone grey metallic, 5215 ¹⁾



anthracite metallic, 5204 ¹⁾



11 Havana brown textured finish, 5229 ¹⁾



15

16 **Non-standard powder-coated finish**

17 Bespoke frame colours at a surcharge – matt, metallic and pearl finishes as well as other colour ranges (DB, Tiger etc.) on request.

18 All frame colours are available at a surcharge with enhanced corrosion protection.

19 **1)** textured finish

20 Colours may differ slightly from those depicted in both hue and finish.

Dimensions and configuration options

Single unit

Order dimensions		Overall awning width										Minimum width		
		150	200	250	300	350	400	450	500	550	600	650	Hard-wired motor	Radio-controlled motor
		70 150	151 200	201 250	251 300	301 350	351 400	401 450	451 500	501 550	551 600	601 650		
H 1)	150												70	80
	200													
	250													
	300													
	350													
	400													
	450													
	500									—	—	—		
dimensions in cm														

dimensions in cm

1) = additional guide track overhang of 90 mm

H = extension

General note

In the case of larger extensions, the cover may sag slightly when the awning is being extended or retracted. in windy or wet conditions and a cover area > 16m², this may lead to the cover coming into contact with the conservatory roof.

Operation	standard	optional	Coupled Awning
crank handle	—	—	not available
hard-wired motor	✓	—	
silentec motor (optionally with an external io / RTS receiver)	—	—	Shadeplus / drop valance
radio-controlled motor io, 868 MHz	—	✓	not available
radio-controlled motor RTS, 433 MHz	—	✓	
radio-controlled motor RTS, 433 MHz with manual override	—	—	

Awning cover	Fabric pattern no.	Standard	Optional	Optional accessories
sunvas ^{1) 6)}	301.. / 309..–315..	✓	—	storm safety clip for the cassette
perla ^{1) 5)}	370 ..	—	✓	wall sealing profile
sunsilk ^{1) 6)}	324.. / 325.. / 328.. / 369..	✓	—	automatic controls (light, wind, rain)
perla FR ^{1) 5)}	374.. / 375..	—	✓	
perfortex ²⁾	331.. / 332..	✓	—	
transolair	338..3) / 339..1)	—	✓	
vuscreen Alu	317..	—	—	
Soltis Perform 92 ⁴⁾	92-20..	—	✓	
Glass fibre screen	272..	—	—	

Standard fabric panel widths

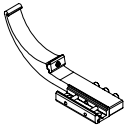
1) 60 cm 2) 120 cm 3) 84 cm

4) 88.5 cm 5) Only with tracfix

6) In the case of striped patterns, an even repeat at every second seam in the seam area is not possible.

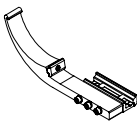
Fixtures, fittings and accessories

Bottom fixture brackets, cassette



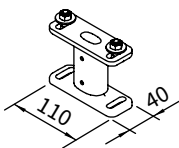
track bracket on housing
left
included with
the delivery

76175.



track bracket on housing
right
included with
the delivery

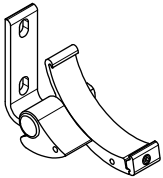
76176.



track bracket
fixture type 32

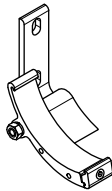
76085.

Cassette fixture bracket



face fixture cassette
bracket
left
5°-45°
pitch adjustment range

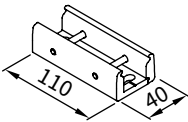
76063.



face fixture cassette
bracket
right
5°-45°
pitch adjustment range

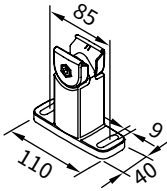
76064.

Track brackets



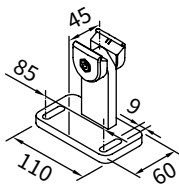
track bracket, flat

76207.



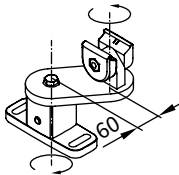
track bracket,
with adjustable head
100 mm

76046.



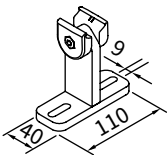
track bracket
with adapter plate
100 mm

76199.



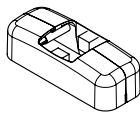
universal
track bracket
100 mm

76054.



track bracket
for conservatory
transom fixture
100 mm

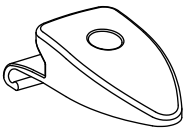
76055.



cover cap
for square track bracket
standard accessory
for bracket

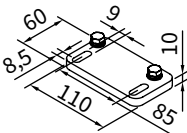
2 × 76718.

Accessories



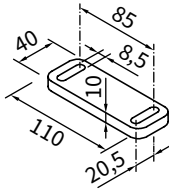
storm safety clip / closing
guide

76235.



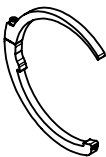
adapter plate
for track bracket

78165.



spacer plate
for track bracket
110 × 40 × 10 mm

78570.



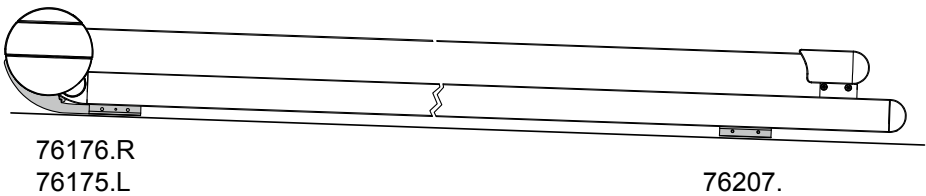
storm safety bracket for
the cassette
(recommended in regions
where there is a risk of
storms and for additional
securing of the cassette)

76197.

Fixture types

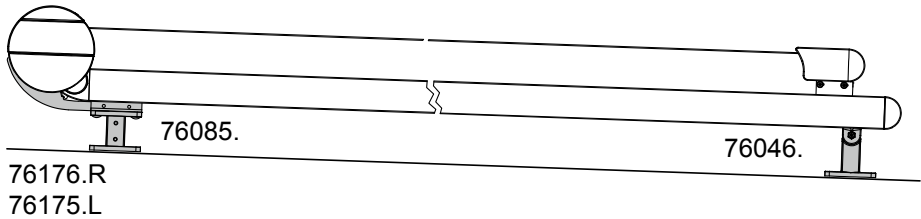
Bottom fixture

11



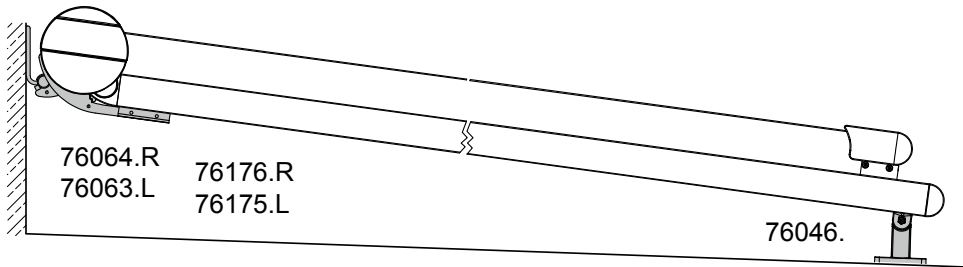
Track-only fixture

32



Face fixture

12



Range of individual bracket options:
see "Fixtures, fittings and accessories".

Bottom fixture:

In the case of extensions > 400 cm, 2 brackets per guide track

Track-only fixture:

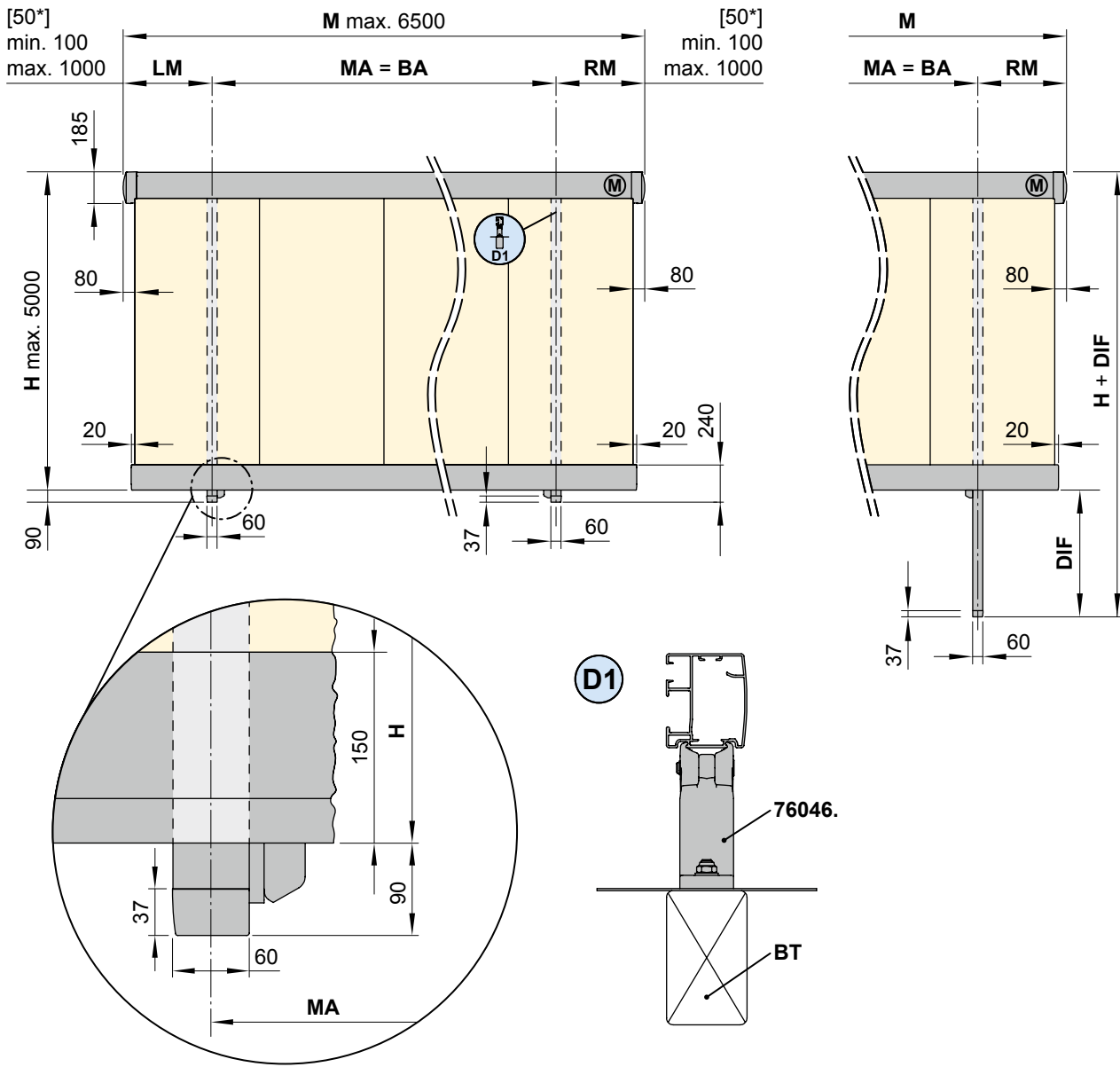
In the case of extensions > 400 cm, 3 brackets per guide track

Face fixture:

In the case of extensions > 400 cm, 2 brackets per guide track

Overview of dimensions

Single unit



Versions that can be ordered

Type 1: With guide tracks indented. Both the R and L measurements must be smaller than the awning fixture width. In the case of asymmetrical units the difference between the L and R dimensions may not exceed 400 mm. The tolerance in the fixture width is + 5 mm / - 10 mm.

Type 2: With the tracks as far out as possible. In this case, the L and R dimensions are 50 mm.

[...*] = dimensions for units with guide tracks pushed out as far as possible

76046. = track bracket 100 mm

BA = width between fixture points

BT = component / fixture substrate

D1 = detail of single guide track with bracket

DIF = difference in measurement

H = *order dimension* = extension

M = overall awning width

LM = *order dimension* = L dimension

MA = *order dimension* = awning fixture width = fixture width

MB = bracket fixture range

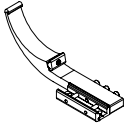
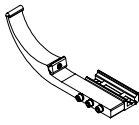
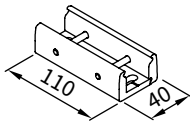
(M) = motor

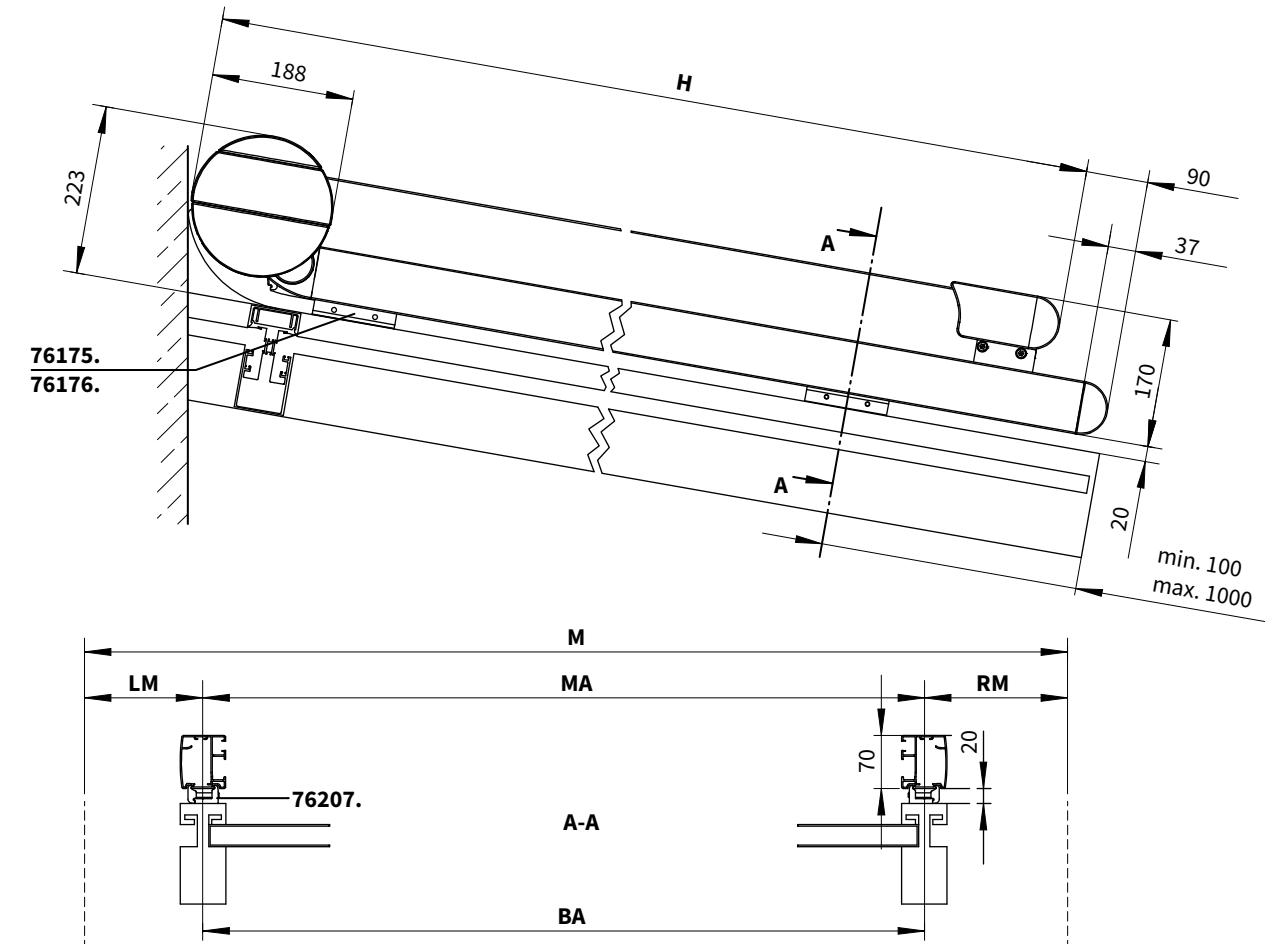
RM = *order dimension* = R dimension

dimensions in mm

Overview of dimensions, fixture type 11

Fixtures, fittings and accessories

 <p>track bracket on housing left included with the delivery</p>	 <p>track bracket on housing right included with the delivery</p>	 <p>track bracket, flat</p>
76175.	76176.	76207.



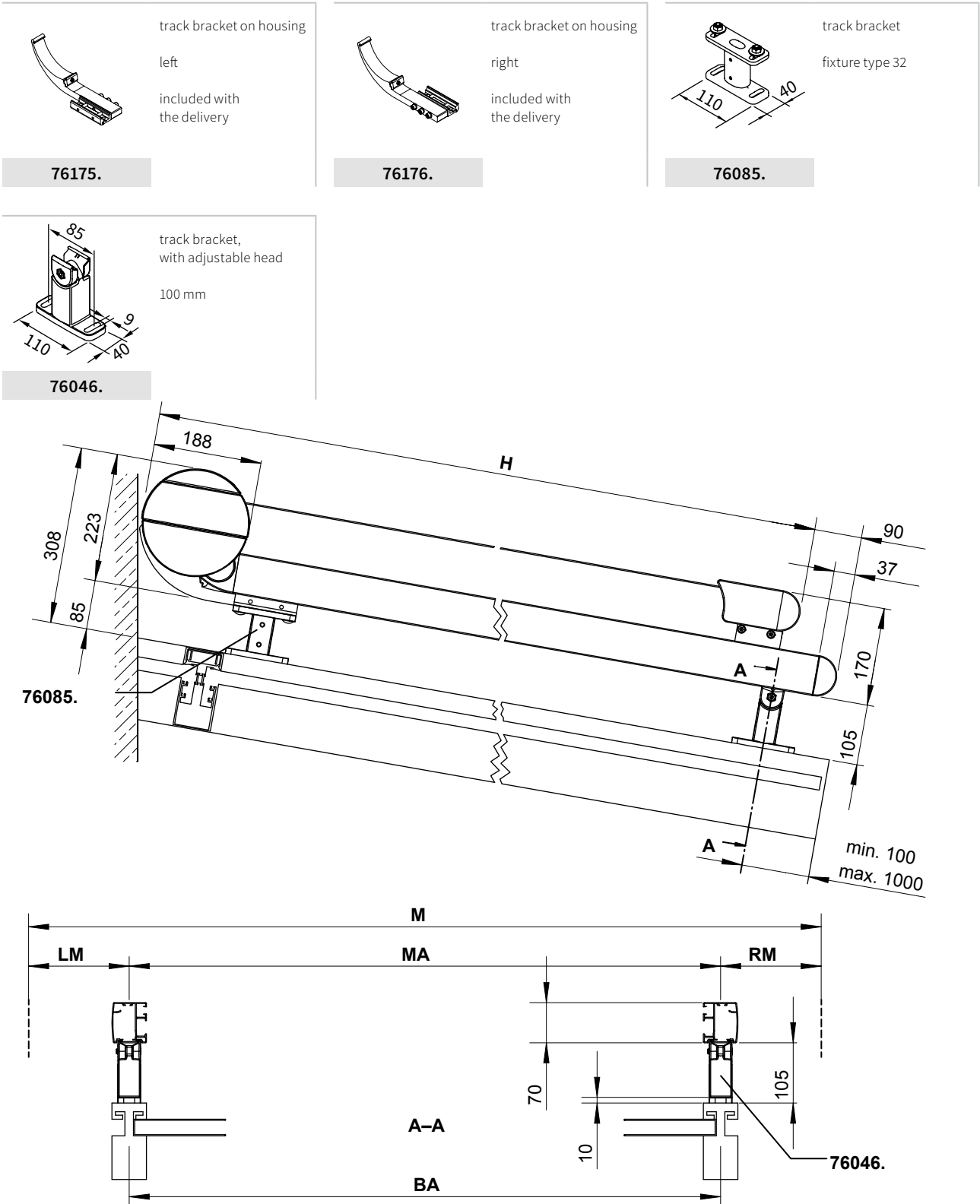
N.B! The maximum pitch of the awning may not exceed 90° This awning type cannot run uphill.

- BA = width between fixture points
- H = *order dimension* = extension
- LM = *order dimension* = L dimension
- M = overall awning width
- MA = *order dimension* = awning fixture width = fixture width
- RM = *order dimension* = R dimension

dimensions in mm

Overview of dimensions, fixture type 32

Fixtures, fittings and accessories

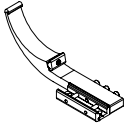


N.B! The maximum pitch of the awning may not exceed 90°. This awning type cannot run uphill.

BA	= width between fixture points	M	= overall awning width
H	= <i>order dimension</i> = extension	MA	= <i>order dimension</i> = awning fixture width = fixture width
LM	= <i>order dimension</i> = L dimension	RM	= <i>order dimension</i> = R dimension
dimensions in mm			

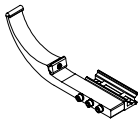
Overview of dimensions, fixture type 12

Fixtures, fittings and accessories



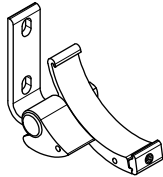
track bracket on housing
left
included with the delivery

76175.



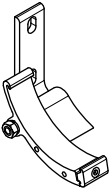
track bracket on housing
right
included with the delivery

76176.



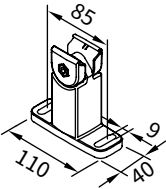
face fixture cassette bracket
left
5°-45° pitch adjustment range

76063.



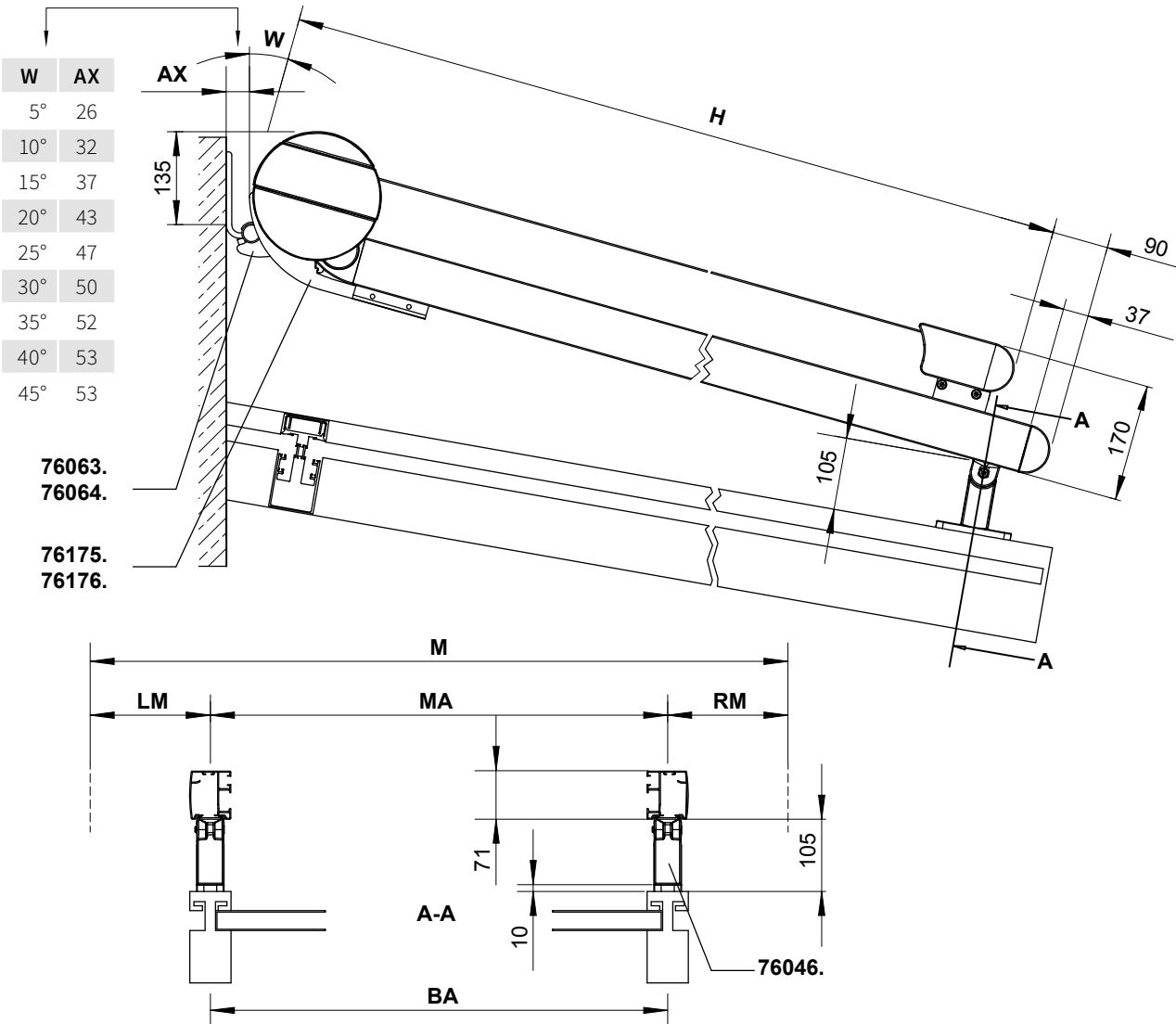
face fixture cassette bracket
right
5°-45° pitch adjustment range

76064.



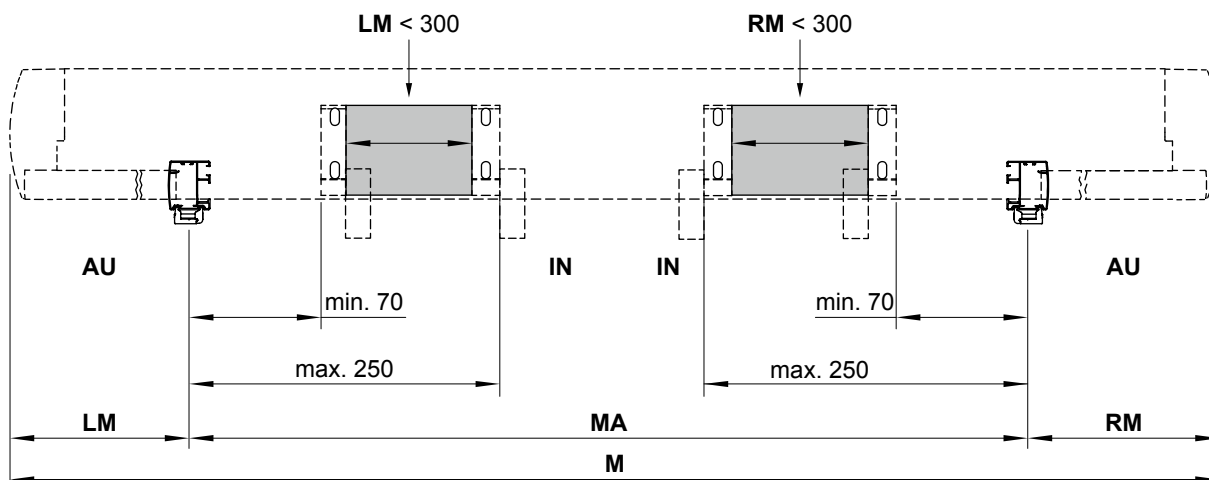
track bracket, with adjustable head
100 mm

76046.

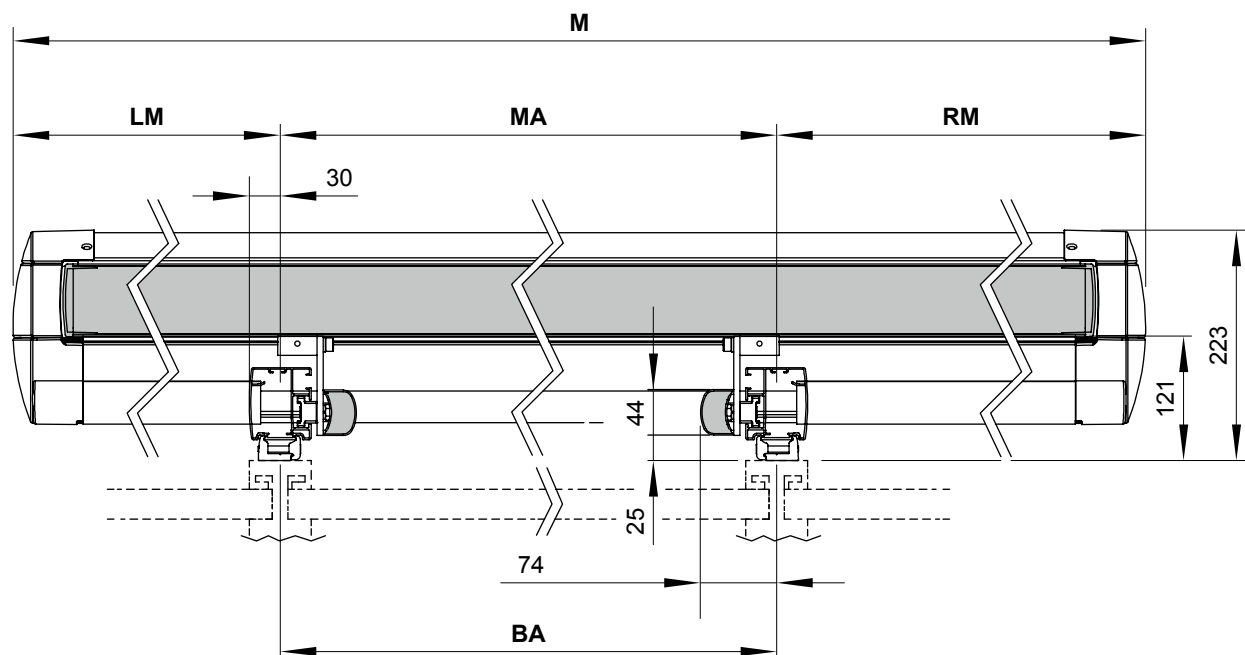


Overview of dimensions

Bracket position, face fixture, fixture type 12



Cross section through the guide track with view of the bogey and the cassette housing



- AU** = exterior
- BA** = width between fixture points
- H** = *order dimension* = extension
- IN** = interior
- LM** = *order dimension* = L dimension
- M** = overall awning width
- MA** = *order dimension* = awning fixture width = fixture width
- RM** = *order dimension* = R dimension

dimensions in mm